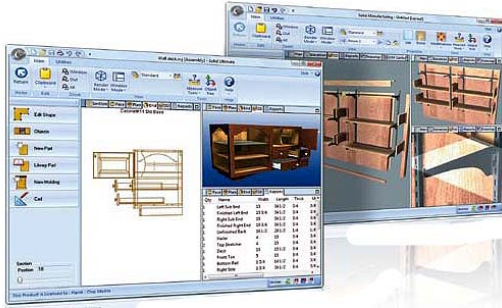


## DESIGN IT!



### Students Learn Industry Standard Cabinet Design Software

Planit is a leading developer of software products servicing the woodworking industry. Their products help companies who design and manufacture products such as case goods for homes, offices, schools and hospitals. Cabinet Vision has been the award-winning software for woodworking professionals since 1983. The Cabinet Vision Solid product line is widely recognized as a major technological advancement for our industry. The products use solid modeling technology to create true three-dimensional presentations of the final product on-screen, while simultaneously generating the necessary information for the shop floor. Cabinet Vision products keep the simple tasks easy and make the complex jobs possible.

## BUILD IT!



### Students Train on Industry Level CNC Woodworking Machines

SCM is one of the world-leading manufacturers of CNC machining centers with a strong history in the woodworking industry. The machines are designed for a broad range of applications including engineered and solid wood, plastics, aerospace, composite materials, aluminum and non-ferrous metals.



## Course of Study:

### Wood Technology - (1 Year)

This is a fundamental course that challenges students with problem solving situations related to wood and wood technology. Basic skills are developed in shop safety, equipment use, layout, design, and manufacturing processes.

Students are also introduced to Cabinet Vision software.

### Advanced Woods - (1 year)

The purpose of this course is to develop the competencies essential to the cabinetmaking industry. These competencies relate to tool and equipment utilization, identification of materials, fasteners, hardware, basic math and communication involved in the construction and design of cabinets. Instruction is in the use of Cabinet Vision, the industry leader in design software.

### I/O Woods (1 year)

A continuation of Advanced Woods, involving more advanced machine processes with the introduction of Computer Numerical Control. Cabinet Vision is used to design and control (Screen to Machine) a SCM flat panel CNC router. This exposes students to the latest processes used in the industry today.

# Why Should a Student Enter the Commercial Cabinetmaking Academy Program?

- Certificate of Completion
- Local industry involvement and support
- Exposure to the local industry for employment opportunities
- Gain experience with Cabinet Vision- The industry leader in design software
- Learn the Screen to Machine Automated Manufacturing Process
- Hands on, real world experiences using industry level machines, equipment, and design software
- SCM CNC Machine Center



## Our Mission:

The Cabinetmaking Academy is designed to prepare students for immediate employment or future self-employment in the cabinetmaking industry and offer post-secondary opportunities through community colleges, universities, trade schools and apprenticeships.



## How to Enroll:

See your counselor at El Dorado High School to enroll in this program.

**START YOUR CAREER  
PATH NOW!**

For questions please contact  
instructor Jim Fox at  
(714) 986-7580 Ext. 11905



## Commercial Cabinetmaking Academy



**El Dorado HS  
1651 Valencia  
Avenue,  
Placentia, CA  
92870**

Placentia-Yorba Linda Unified School District

**(714) 986-7580**