

PLACENTIA-YORBA LINDA UNIFIED SCHOOL DISTRICT
1301 E. Orangethorpe Avenue
Placentia, CA

Minutes
Regular Meeting
Board of Education

6:00 p.m., Tuesday, October 28, 2008
District Educational Center
1301 E. Orangethorpe Avenue
Placentia, CA 92870

A Regular Meeting of the Board of Education of the Placentia-Yorba Linda Unified School District, was called to order by Mrs. Judy Miller, President, at 6:00 p.m., Tuesday, October 28, 2008, at the District Educational Center, 1301 E. Orangethorpe Avenue, Placentia.

CLOSED SESSION

Adjourned to Closed Session for the purpose of discussing matters expressly authorized by Government Code Sections 3549.1, 54956.8, 54956.95, 54957, and 54957.6 at 6:02 p.m.

REGULAR SESSION

Reconvened to Regular Session at 7:04 p.m.

REPORTED OUT OF CLOSED SESSION

Appointed Monica Barrera as elementary school principal, effective November 17, 2008.

Action: Carried
Ayes: 5
Noes: 0

Motion: Mrs. Janice Wagner
Second: Mr. Eric Padget

PLEDGE OF ALLEGIANCE

ROLL CALL

Members Present: Mrs. Judy Miller, President
Mrs. Carol Downey, Vice President
Mrs. Karin Freeman, Clerk
Mrs. Janice Wagner, Trustee
Mr. Eric Padget, Trustee
Dr. Dennis Smith, Secretary
Cassi Ellis, Student Board Representative

MINUTES

Approved the minutes of the Regular Meeting of October 14, 2008.

Action: Carried
Ayes: 5
Noes: 0

Motion: Mrs. Carol Downey
Second: Mrs. Karin Freeman

RECOGNITION/PRESENTATIONS

None

PUBLIC COMMENT

- Mr. Greg Gillaspy addressed the Board regarding student clubs and organizations.
- Mr. Grant Quental spoke to the Board regarding the importance of the District's music program and announced the participation of a number of El Dorado High School band members in the 2009 Tournament of Roses Honor Band as well as the participation of the El Dorado High School marching band in the 2010 Tournament of Roses Parade.

PUBLIC HEARINGS

1. A Public Hearing was held relative to approval of Course Sequencing Plan submitted by the North Orange County Regional Occupational Program.

Action: Carried
Ayes: 5
Noes: 0

Motion: Mrs. Jan Wagner
Second: Mr. Eric Padget

2. A Public Hearing was held relative to dedication of Easement to the Yorba Linda Water District for water service on the Yorba Linda High School property.

Action: Carried
Ayes: 5
Noes: 0

Motion: Mrs. Karin Freeman
Second: Mrs. Carol Downey

STUDENT BOARD REPORT

Student Board Representative Cassi Ellis provided a report of the activities and events occurring at the district's high schools.

SUPERINTENDENT'S REPORT

- Steve Umber, Director of Transportation, provided a district transportation update.
- Mike Bailey, Director of Facilities and Planning, provided a Measure A project update on athletic facilities.
- Rosie Baldwin-Shirey, Principal, Keith Carmona, Assistant Principal, and Jane Ollard, Counselor, provided an overview of Tuffree Middle School's recent D³ (Don't Do Drugs) event.

APPROVAL OF AGENDA

Approved the October 28, 2008, Board of Education agenda as amended and recommended by the Superintendent.

Action: Carried
Ayes: 5
Noes: 0

Motion: Mrs. Carol Downey
Second: Mrs. Janice Wagner

CONSENT CALENDAR

1. Approved/ratified purchase orders in the following amounts: **(2008/09)** – General Fund (01), \$467,459.44; Adult Education Fund (11), \$203.52; Child Development Fund (12), \$10,151.22; Cafeteria Fund (13), \$2,908.39; Deferred Maintenance Fund (14), \$64,541.11; Building Fund, (Y) Series B, (22), \$5,000.00; Building Fund Measure Y (Series C) Fund (23), \$19,250.69; Capital Facilities Fund (25), \$3,461.36; Building Fund Measure A (Series A) Fund (26), \$189,523.12; School Facilities Fund Prop 47 Fund (39), \$30,605.86; Insurance Workers Comp Fund (68), \$211.31
2. Approved warrant listings and payroll register in the following amounts: Warrant Registers #728501 through 735639 and #562013 through 562213; current year expenditures (September 28, 2008, through October 11, 2008) \$3,825,564.79; total prior year expenditures, \$151,654.96 (2007-2008); and payroll register 3A, \$10,112,052.86 and 3B, \$3,564,700.40
3. Approved agreement with Vavrinek, Trine, Day & Co., LLP, to perform the District financial audit for the fiscal years ending June 30, 2009, 2010, and 2011.
4. Accepted as complete the project(s) listed and authorized filing Notice(s) of Completion. (See attached.)
5. Adopted Resolution No. 9 to delegate settlement authority to the Superintendent or his designee to sign workers' compensation settlements in an amount not to exceed \$25,000. (See attached.)
6. Awarded bid to lowest responsive and responsible bidder and approved contract for Bid No. 209-6, to South Coast Pool Plastering, Inc. for Swimming Pool Renovation at Valencia High School. Project No. VHS-9224-9304-074.
7. Awarded bid to lowest responsive and responsible bidder and approved contract for Bid No. 209-7 to Digital Networks Group for Smart Classrooms Infrastructure at Glenknoll Elementary School and Yorba Linda Middle School. Project Nos. GLK-9206-9304, YLM-9203-9306.
8. Approved Change Order No. 3 to Purchase Order No. 811470, Bid No. 208-31 to Byrom-Davey, Inc. for Bradford Stadium Field Upgrades at Valencia High School, Project No. VHS 9224-9301-071.
9. Approved Reduction of Retention to Purchase Order No. 704532, Bid No. 207-06 to Edge Development for Gualberto J. Valadez Middle School Academy, Project No. SW-9533.
10. Approved Reduction of Retention to Purchase Order No. 706728, Bid No. 207-11 to Superior Wall Systems for Gualberto J. Valadez Middle School Academy, Project No. SW-9533.
11. Approved Amendment No. 1 to the agreement for architectural services with HMC Architects to include reimbursable expenses on various Measure A projects.
12. Approved Amendment No. 1 to the agreement for architectural services with MVE Institutional to include reimbursable expenses on various Measure A projects.
13. Approved Amendment No. 1 to the agreement for architectural services with WLC Architects to include reimbursable expenses on various Measure A projects.
14. Approved Resolution No. 10, to Dedicate Easement to Yorba Linda Water District for water service at the Yorba Linda High School site. (See attached.)

CONSENT CALENDAR, Continued

15. Approved Independent Contractor Agreements – Educational Services - as listed in accordance with Board Policy No. 4124, Retention of Consultants. (See attached.)
16. Approved special education master contracts, individual service contracts and related services for the 2008/2009 school year. (Individual contracts on file) (See attached.)
17. Approved agreement with Telecommunications of Orange County, KOCE-TV/KOCE-DT Foundation for classroom online video streaming.
18. Approved Participation Agreement with M.I.N.D. Institute for Math+Music Program at Mabel Paine Elementary School.
19. Approved Ruby Drive Elementary School to participate in the Inside the Outdoors Field Program with the Orange County Department of Education.
20. Approved Group Tour Agreement with Travel Teens for Ruby Drive Elementary School for extended field trips May 19 and 26, 2009 to Santa Barbara, California.
21. Approved Amendment #1 to Agreement with the Orange County Department of Education to provide Module I training for Tier II candidates in the district.
22. Approved GEAR UP program application for Valadez Middle School Academy for the 2009-2011 school years.
23. Approved Placentia-Yorba Linda Unified School District five-year plan/application for Career Technical Education for 2008-2012.
24. Approved waiver requested by Valencia High School student 14972 indicating that he/she has met the CAHSEE requirement for Math and English language arts.
25. Approved waiver requested by El Dorado High School student 1919 indicating that he/she has met the CAHSEE requirement for Math.
26. Approved waiver requested by El Dorado High School student 51751 indicating that he/she has met the CAHSEE requirement for Math.
27. Approved waiver requested by El Dorado High School student 970733 indicating that he/she has met the CAHSEE requirement for Math and English language arts.
28. Approved waiver requested by El Dorado High School student 961242 indicating that he/she has met the CAHSEE requirement for Math.
29. Approved waiver requested by El Dorado High School student 950513 indicating that he/she has met the CAHSEE requirement for Math.
30. Approved/ratified extended field trips as listed in accordance with Board Policy No. 6153, Field Trips. (See attached.)
31. Accepted gifts as listed, such action being in compliance with Education Code Section 41032, and directed the Superintendent to send letters of appreciation. (See attached.)

CONSENT CALENDAR, Continued

32. Approved the Stipulated Expulsion Agreement between the Placentia-Yorba Linda Unified School District and the parents of 0918A2.
33. Approved the Findings of Fact and recommendation of the Administrative Panel which found that 0920C violated Section 48900(c) of the California Education Code.
34. Approved the Stipulated Expulsion Agreement between the Placentia-Yorba Linda Unified School District and the parents of 0923C3.
35. Approved the student teaching agreement with California State University, Long Beach.
36. Approved Classified Personnel Report. (See attached.)
37. Approved Certificated Personnel Report, as amended. (See attached.)

Approved the above listed recommendations.

Action: Carried
Ayes: 5
Noes: 0

Motion: Mrs. Karin Freeman
Second: Mr. Eric Padget

GENERAL FUNCTIONS

1. Adopted Board Policy 6145.5, *Student Clubs and Organizations*. (See attached.)

Action: Carried
Ayes: 5
Noes: 0

Motion: Mr. Eric Padget
Second: Mrs. Carol Downey

2. Revise Board Bylaw 9250.1, *Conflict of Interest Code*, first reading. (See attached.)

Action: Carried
Ayes: 5
Noes: 0

Motion: Mrs. Carol Downey
Second: Mrs. Janice Wagner

3. Adopted Resolution No.11 in support of the City of Placentia's efforts to mitigate the effects of rail traffic through the District and its communities. (See attached.)

Action: Carried
Ayes: 5
Noes: 0

Motion: Mrs. Karin Freeman
Second: Mr. Eric Padget

CURRICULUM & INSTRUCTION

Approved Course Sequencing Plan submitted by the North Orange County Regional Occupational Program.

Action: Carried
Ayes: 5
Noes: 0

Motion: Mrs. Karin Freeman
Second: Mrs. Janice Wagner

BUSINESS & FINANCIAL

Awarded Bid Number 209-4 Supplies and authorized the Purchasing Director to issue contracts to the following: Southwest School and Office Supply for office, classroom and art and craft supplies; SupplyMaster for printer ink and toner; Sigma Sports Group for playground supplies; Glasby Maintenance Supply for custodial supplies.

Action: Carried
Ayes: 5
Noes: 0

Motion: Mrs. Janice Wagner
Second: Mr. Eric Padget

PERSONNEL

Sunshined the Placentia-Yorba Linda Unified School District classified collective bargaining proposal for the 2008-2009 school year.

Action: Carried
Ayes: 5
Noes: 0

Motion: Mr. Eric Padget
Second: Mrs. Karin Freeman

BOARD INFORMATION:

Discussion regarding First Quarter Financial Report as of September 30, 2008.

COMMUNICATIONS

1. 2008 CSBA Annual Education Conference and Trade Show update brochure
2. Invitation and tickets to the Placentia-Yorba Linda Unified School District Annual Band Pageant
3. American Association of School Administrators brochure regarding the National Conference on Education in February 2009
4. Booklet regarding 2009 National School Boards Association Annual Conference in San Diego, April 2009
5. Invitation to Schools First Credit Union reception honoring the five Teachers of the Year finalists on November 19, 2008
6. Invitation to Association of Placentia Linda Educators' (APLE) new teacher recognition dinner on November 17
7. Thank you note from Karen Wilkins, Principal of El Dorado High School, for donation to the EDHS Staffulty Scholarship Fund in memory of her husband.

BOARD REPORT

1. Mr. Eric Padget indicated he had attended the Yorba Linda State of the City luncheon on October 16. He also appreciated the opportunity to attend the Superintendent's Community Advisory Council meeting and expressed appreciation for the invitation to the district's Annual Band Pageant. Mr. Padget attended Tuffree Middle School's Don't Do Drugs event and felt it was positively impactful on students. He also enjoyed the Yorba Linda Fiesta Days Parade.
2. Mrs. Janice Wagner enjoyed the Yorba Linda State of the City luncheon as well as the Yorba Linda Fiesta Days Parade; she also appreciates the participation of district schools in these community

BOARD REPORT, Continued

events. Mrs. Wagner was pleased to have visited Golden and Fairmont Elementary Schools and indicated both schools had excellent writing and science programs. Mrs. Wagner requested information on Latin materials used at a number of district schools, the impact of budget cuts on the schools, as well as steps taken to address HVAC issues at Golden Elementary School. She also expressed appreciation for the new deck surrounding a shade tree at Golden.

3. Mrs. Karin Freeman attended the Yorba Linda State of the City luncheon and appreciated district staff who also attended this important community event. Mrs. Freeman also enjoyed the Don't Do Drugs event at Tuffree Middle School and commented on the participation of members of the community as well as special guest Shaquille O'Neal. Students were very excited about the event which was very well done. Mrs. Freeman commented on the selection of Dr. Mike Worley as Superintendent of the North Orange County Regional Occupational Program to replace Dr. Pat Frank who will be retiring in March 2009.
4. Mrs. Carol Downey was extremely impressed with the presentations at the Don't Do Drugs event at Tuffree Middle School and shared that there was a large representation from law local enforcement agencies. She also enjoyed the Yorba Linda Fiesta Days Parade.
5. Mrs. Judy Miller was pleased to share that Student Board Representative Cassi Ellis had been selected as El Dorado High School's Homecoming Queen.

ADJOURNMENT

Time: 9:12 p.m.

Mrs. Judy Miller, President, adjourned the October 28, 2008, Board of Education meeting in memory of Nicholas Colombo, 2008 graduate of Valencia High School, at 9:12 p.m.

Action: Carried
Ayes: 5
Noes: 0

Motion: Mrs. Karin Freeman
Second: Mrs. Janice Wagner

NEXT SCHEDULED MEETING

November 18, 2008

NOTICES OF COMPLETION

<u>P.O. Number</u>	<u>Contractor</u>	<u>Project</u>
706633	McKenna General Engineering, Inc.	Yorba Linda High School Bid No. 207-3 Electrical Services
903243	Wicketts Intl Plumbing Cont.	Tynes Elementary School Bid No. 205-14 Plumbing Services
811470	Byrom-Davey, Inc.	Valencia High School Bid No. 208-31 Bradford Stadium Field Upgrade

RESOLUTION OF THE BOARD OF TRUSTEES
PLACENTIA-YORBA LINDA UNIFIED SCHOOL DISTRICT
OF ORANGE COUNTY, STATE OF CALIFORNIA

RESOLUTION NO. 9
OCTOBER 28, 2008

A Resolution of the Board of Education of the Placentia-Yorba Linda Unified School District authorizing the Superintendent or his designee to sign workers' compensation settlements pursuant to Government Code Section 935.4.

On motion of Trustee Karin Freeman duly seconded and carried, the following Resolution was adopted:

WHEREAS, Government Code 935.4 allows a legislative body, by ordinance or resolution, to delegate to someone other than the legislative body itself, the authority to allow, compromise, or settle a claim against the public agency. If the amount to be paid does not exceed \$50,000; and

WHEREAS, the workers' compensation demands in the Workers' Compensation Program requires settling claims resulting in additional costs; and

WHEREAS, at occasion these workers' compensation claims are determined through court proceedings; and

WHEREAS, the District is obligated to settle workers' compensation claims and incur costs of such settlements, under the laws governing workers' compensation; and

WHEREAS, a delay in settling workers' compensation claims may result in additional costs and/or noncompliance with workers' compensation law.

NOW, THEREFORE, BE IT RESOLVED as follows:

1. The Governing Board of Placentia-Yorba Linda Unified School District hereby delegates to the Superintendent or his designee the authority to allow, compromise, or settle claims against the District's workers' compensation program in an amount not to exceed \$25,000.
2. The authorization includes the settlement of workers' compensation awards, attorney fees, incidental expenses, court settlements and all other one-time costs exclusive of ongoing cost of the workers' compensation program.
3. The Director or Assistant Director Fiscal Services is required to submit a semi-annual report to the Board of Education indicating the type, nature and amount of such settlements pursuant to the authority of this resolution.
4. The Superintendent is directed to amend Administration Regulation 3532.1 to make it consistent with the authorization set forth in this resolution.
5. The authorization set forth in this resolution shall remain in effect until such time as it is rescinded by the District Governing Board.

AYES: Judy Miller, Carol Downey, Karin Freeman, Janice Wagner, Eric Padgett
NOES: None
ABSENT: None

STATE OF CALIFORNIA)
) ss.
COUNTY OF ORANGE)

I, Dennis M. Smith, Secretary of the Board of Education of the Placentia-Yorba Linda Unified School District of Orange County, California, hereby certify that the above and foregoing Resolution was duly and regularly adopted by said Board at a regular meeting thereof held on October 28, 2008, and passed by a unanimous vote of said Board.

IN WITNESS WHEREOF, I have set my hand this 28 day of October, 2008.

Dennis M. Smith, Superintendent
Secretary, Board of Education

**PLACENTIA-YORBA LINDA UNIFIED SCHOOL DISTRICT
RESOLUTION NO. 10**

**RESOLUTION AUTHORIZING THE DEDICATION OF WATER SERVICE TO
YORBA LINDA WATER DISTRICT**

WHEREAS, Yorba Linda Water District ("Company") has previously requested that Placentia-Yorba Linda Unified School District ("School District") dedicate an easement for water services ("Easement") upon a portion of the Yorba Linda High School site. A legal description and a map depicting the location of the Easement are attached hereto as Exhibits "A" and "B," respectively, and are incorporated by reference herein; and

WHEREAS, pursuant to Education Code section 17556, the governing board of a school district may convey to a municipal corporation or political subdivision of the state any real property belonging to such school district; and

WHEREAS, pursuant to Education Section 17557, on October 14, 2008, the School District's governing board, in a regular open meeting, by a two-thirds vote of all its members adopted Resolution No. 8 declaring its intention to dedicate the Easement; and

WHEREAS, in accordance with Education Code Section 17557, the School District's governing board fixed October 28, 2008, for a public hearing ("Public Hearing") upon the question of making the dedication of Easement to Yorba Linda Water District; and

WHEREAS, pursuant to Education Code Section 17558, the District posted copies of Resolution No. 8 in three public places in the School District not less than ten (10) days before the Public Hearing, and published notice once, not less than five days before the Public Hearing, in a local newspaper; and

WHEREAS, pursuant to Education Code Section 17558, on October 28, 2008, at a regular meeting of the School District's governing board, the District held a Public Hearing upon the question about making the dedication of the Easement to Yorba Linda Water District; and

WHEREAS, no petition pursuant to Education Code Section 17560 has been filed with the School District's governing board.

NOW, THEREFORE, THE BOARD DOES HEREBY RESOLVE, DETERMINE AND ORDER AS FOLLOWS:

Section 1. That the above recitals are all true and correct.

Section 2. That the Board of the School District hereby determines that the School District is in compliance with all applicable laws, and hereby approves granting of the Easement.

Section 3. This Resolution shall be effective immediately upon adoption.

Passed and adopted by the Governing Board of Placentia-Yorba Linda Unified School District on October 28, 2008.

Judy Miller
President of the Board of Education of the
Placentia-Yorba Linda Unified School District

Karin Freeman
Clerk of the Board of Education of the
Placentia-Yorba Linda Unified School District

EXHIBIT A

THOSE PORTIONS OF SECTION 23, TOWNSHIP 3 SOUTH, RANGE 9 WEST, S. B. M. IN THE CITY OF YORBA LINDA, COUNTY OF ORANGE, STATE OF CALIFORNIA, AS SHOWN ON RECORD OF SURVEY FILED IN BOOK 74, PAGE 37, OF RECORDS OF SURVEYS IN THE OFFICE OF THE RECORDER OF SAID COUNTY, WITHIN THE FOLLOWING DESCRIBED PARCELS:

PARCEL 1

A STRIP OF LAND 26.00 FEET WIDE, LYING 13.00 FEET ON EACH SIDE OF THE FOLLOWING DESCRIBED CENTERLINE:

BEGINNING A POINT ON THAT CERTAIN COURSE HAVING A BEARING AND DISTANCE OF NORTH 74° 30' 00" WEST 400.00 FEET IN THE SOUTHERLY LINE OF BASTANCHURY ROAD, 99.00 WIDE, AS SHOWN ON MAP OF TRACT NO. 16913, FILED IN BOOK 879, PAGES 22 THROUGH 25, INCLUSIVE, OF MISCELLANEOUS MAPS, IN THE OFFICE OF SAID RECORDER, DISTANT THEREON NORTH 74° 30' 00" WEST 43.11 FEET FROM THE EASTERLY TERMINUS THEREOF; THENCE SOUTH 00° 06' 41" WEST 203.76 FEET TO A POINT HEREBY DESIGNATED AS POINT A; THENCE SOUTH 00° 06' 41" WEST 255.16 FEET TO A POINT HEREBY DESIGNATED AS POINT B, SAID POINT BEING THE BEGINNING OF A TANGENT CURVE CONCAVE NORTHEASTERLY AND HAVING A RADIUS OF 63.00 FEET; THENCE SOUTHERLY ALONG SAID CURVE THROUGH A CENTRAL ANGLE OF 46° 51' 48" AN ARC DISTANCE OF 51.53 FEET TO A POINT HEREBY DESIGNATED AS POINT C; THENCE CONTINUING ALONG SAID CURVE THROUGH A CENTRAL ANGLE OF 43° 08' 12" AN ARC DISTANCE OF 47.43 FEET; THENCE SOUTH 89° 53' 19" EAST 1.00 FOOT TO A POINT HEREBY DESIGNATED AS POINT D; THENCE SOUTH 89° 53' 19" EAST 146.13 FEET TO THE BEGINNING OF A TANGENT CURVE CONCAVE NORTHWESTERLY AND HAVING A RADIUS OF 63.00 FEET; THENCE NORTHEASTERLY ALONG SAID CURVE THROUGH A CENTRAL ANGLE OF 44° 59' 59" AN ARC DISTANCE OF 49.48 FEET; THENCE NORTH 45° 06' 42" EAST 343.65 FEET TO A POINT HEREBY DESIGNATED AS POINT E; THENCE NORTH 45° 06' 42" EAST 230.00 FEET TO THE BEGINNING OF A TANGENT CURVE CONCAVE WESTERLY AND HAVING A RADIUS OF 13.00 FEET; THENCE NORTHERLY ALONG SAID CURVE THROUGH A CENTRAL ANGLE OF 90° 00' 00" AN ARC DISTANCE OF 20.42 FEET; THENCE NORTH 44° 53' 18" WEST 13.36 FEET TO THE SOUTHERLY LINE OF SAID BASTANCHURY ROAD.

THE SIDE LINES OF THE ABOVE DESCRIBED STRIP OF LAND SHALL BE PROLONGED OR SHORTENED SO AS TO TERMINATE AT THEIR POINTS OF INTERSECTION SO AS TO MAKE A CONTINUOUS EXTERIOR BOUNDARY OF SAID STRIP OF LAND, AND AT THE BEGINNING AND END THEREOF SO AS TO TERMINATE IN THE SOUTHERLY LINE OF SAID BASTANCHURY ROAD.

PARCEL 1.1

A STRIP OF LAND 10.00 FEET WIDE, LYING 5.00 FEET ON EACH SIDE OF THE FOLLOWING DESCRIBED CENTERLINE:

BEGINNING AT THE ABOVE DESCRIBED POINT A; THENCE NORTH 89° 53' 19" WEST 21.00 FEET.

EXCEPT THEREFROM THAT PORTION THEREOF WITHIN THE ABOVE DESCRIBED PARCEL 1.

PARCEL 1.2

A STRIP OF LAND 20.00 FEET WIDE, LYING 12.00 FEET NORTHERLY AND 8.00 FEET SOUTHERLY OF THE FOLLOWING DESCRIBED CENTERLINE:

BEGINNING AT THE ABOVE DESCRIBED POINT B; THENCE NORTH 89° 53' 19" WEST 33.00 FEET.

EXCEPT THEREFROM THAT PORTION THEREOF WITHIN THE ABOVE DESCRIBED PARCEL 1.

PARCEL 1.3

A STRIP OF LAND 18.00 FEET WIDE, LYING 9.00 FEET ON EACH SIDE OF THE FOLLOWING DESCRIBED CENTERLINE:

BEGINNING AT THE ABOVE DESCRIBED POINT C; THENCE SOUTH 43° 14' 53" WEST 33.00 FEET.

EXCEPT THEREFROM THAT PORTION THEREOF WITHIN THE ABOVE DESCRIBED PARCEL 1.

PARCEL 1.4

A STRIP OF LAND 10.00 FEET WIDE, LYING 5.00 FEET ON EACH SIDE OF THE FOLLOWING DESCRIBED CENTERLINE:

BEGINNING AT THE ABOVE DESCRIBED POINT D; THENCE SOUTH 00° 06' 41" WEST 21.00 FEET.

EXCEPT THEREFROM THAT PORTION THEREOF WITHIN THE ABOVE DESCRIBED PARCEL 1.

PARCEL 1.5

A STRIP OF LAND 10.00 FEET WIDE, LYING 5.00 FEET ON EACH SIDE OF THE FOLLOWING DESCRIBED CENTERLINE:

BEGINNING AT THE ABOVE DESCRIBED POINT E; THENCE SOUTH 44° 53' 18" EAST 21.00 FEET.

EXCEPT THEREFROM THAT PORTION THEREOF WITHIN THE ABOVE DESCRIBED PARCEL 1.

PARCEL 2

A STRIP OF LAND OF VARYING WIDTH THE CENTERLINE OF WHICH IS DESCRIBED AS FOLLOWS:

BEGINNING A POINT ON THAT CERTAIN CURVE CONCAVE SOUTHERLY HAVING A RADIUS OF 1653.00, IN SAID SOUTHERLY LINE OF SAID BASTANCHURY ROAD, 92.00 FEET WIDE, AS SHOWN ON SAID MAP OF TRACT NO. 16913, A RADIAL OF SAID CURVE TO SAID POINT HAS A BEARING OF NORTH 10° 38' 42" EAST; THENCE SOUTH 10° 38' 42" WEST 33.61 FEET TO THE BEGINNING OF A TANGENT CURVE CONCAVE WESTERLY AND HAVING A RADIUS OF 109.00 FEET; THENCE SOUTHERLY ALONG SAID CURVE THROUGH A CENTRAL ANGLE OF 15° 20' 38" AN ARC DISTANCE OF 29.19 FEET; THENCE SOUTH 25° 59' 20" WEST 61.75 FEET TO THE BEGINNING OF A TANGENT CURVE CONCAVE EASTERLY AND HAVING A RADIUS OF 65.00 FEET; THENCE SOUTHERLY ALONG SAID CURVE THROUGH A CENTRAL ANGLE OF 25° 52' 39" AN ARC DISTANCE OF 29.36 FEET; THENCE SOUTH 00° 06' 41" WEST 373.40 FEET TO A POINT HEREBY DESIGNATED AS POINT F; THENCE SOUTH 00° 06' 41" WEST 221.70 FEET TO A POINT HEREBY DESIGNATED AS POINT G; THENCE SOUTH 00° 06' 41" WEST 87.60 FEET TO THE BEGINNING OF A TANGENT CURVE CONCAVE NORTHEASTERLY AND HAVING A RADIUS OF 38.00 FEET; THENCE SOUTHERLY ALONG SAID CURVE THROUGH A CENTRAL ANGLE OF 90° 00' 00" AN ARC DISTANCE OF 59.69 FEET; THENCE SOUTH 89° 53' 19" EAST 56.00 FEET TO A POINT HEREBY DESIGNATED AS POINT H; THENCE SOUTH 89° 53' 19" EAST 446.70 FEET TO A POINT HEREBY DESIGNATED AS POINT I; THENCE SOUTH 89° 53' 19" EAST 15.00 FEET TO A POINT HEREBY DESIGNATED AS POINT J; THENCE SOUTH 89° 53' 19" EAST 63.25 FEET TO A POINT HEREBY DESIGNATED AS POINT K; THENCE SOUTH 89° 53' 19" EAST 568.84 FEET TO A POINT HEREBY DESIGNATED AS POINT L; THENCE SOUTH 89° 53' 19" EAST 10.00 FEET TO A POINT HEREBY DESIGNATED AS POINT M; THENCE SOUTH 45° 00' 00" EAST 174.94 FEET TO A POINT HEREBY DESIGNATED AS POINT N; THENCE SOUTH 89° 53' 19" EAST 92.12 FEET TO THE BEGINNING OF A TANGENT CURVE CONCAVE NORTHWESTERLY AND HAVING A RADIUS OF 38.00 FEET; THENCE NORTHEASTERLY ALONG SAID CURVE THROUGH A CENTRAL ANGLE OF 44° 59' 59" AN ARC DISTANCE OF 29.84 FEET; THENCE NORTH 45° 06' 42" WEST 41.00 FEET TO A POINT HEREBY

DESIGNATED AS POINT V; THENCE NORTH 45° 06' 42" WEST 187.10 FEET TO A POINT HEREBY DESIGNATED AS POINT W; THENCE NORTH 44° 53' 18" WEST 546.04; THENCE NORTH 00° 00' 31" EAST 42.53 FEET TO A POINT HEREBY DESIGNATED AS POINT O, SAID POINT BEING THE BEGINNING OF A NON TANGENT CURVE CONCAVE SOUTHEASTERLY AND HAVING A RADIUS OF 127.50 FEET, A RADIAL OF SAID CURVE TO SAID POINT O HAS A BEARING OF NORTH 80° 58' 16" WEST; THENCE NORTHERLY ALONG SAID CURVE THROUGH A CENTRAL ANGLE OF 10° 15' 45" AN ARC DISTANCE OF 22.84 FEET TO A POINT HEREBY DESIGNATED AS POINT P; THENCE CONTINUING NORTHERLY ALONG SAID CURVE THROUGH A CENTRAL ANGLE OF 15° 08' 20" AN ARC DISTANCE OF 33.69 FEET TO A POINT HEREBY DESIGNATED AS POINT Q; THENCE CONTINUING NORTHERLY ALONG SAID CURVE THROUGH A CENTRAL ANGLE OF 42° 41' 31" AN ARC DISTANCE OF 95.00 FEET TO A POINT HEREBY DESIGNATED AS POINT X; THENCE CONTINUING EASTERLY ALONG SAID CURVE THROUGH A CENTRAL ANGLE OF 20° 48' 19" AN ARC DISTANCE OF 46.30 FEET; THENCE TANGENT TO SAID CURVE SOUTH 82° 04' 21" " EAST 146.44 FEET; THENCE SOUTH 89° 53' 19" EAST 36.00 FEET TO A POINT HEREBY DESIGNATED AS POINT R; THENCE SOUTH 89° 53' 19" EAST 9.00 FEET TO A POINT HEREBY DESIGNATED AS POINT S; THENCE SOUTH 89° 53' 19" EAST 66.09 FEET TO A POINT HEREBY DESIGNATED AS POINT T; THENCE SOUTH 00° 06' 41" WEST 71.43 FEET; THENCE SOUTH 43° 30' 00" EAST 96.39 FEET; THENCE NORTH 46° 30' 00" EAST 73.55 FEET.

THAT PORTION OF THE ABOVE DESCRIBED VARYING WIDTH STRIP OF LAND FROM THE POINT OF BEGINNING TO POINT M SHALL BE 26.00 FEET WIDE, LYING 13.00 FEET ON EACH SIDE OF THE ABOVE DESCRIBED CENTER LINE.

THAT PORTION OF THE ABOVE DESCRIBED VARYING WIDTH STRIP OF LAND FROM POINT M TO POINT N SHALL BE 20.00 FEET WIDE, LYING 10.00 FEET ON EACH SIDE OF THE ABOVE DESCRIBED CENTER LINE.

THAT PORTION OF THE ABOVE DESCRIBED VARYING WIDTH STRIP OF LAND FROM POINT N TO POINT O SHALL BE 26.00 FEET WIDE, LYING 13.00 FEET ON EACH SIDE OF THE ABOVE DESCRIBED CENTER LINE.

THAT PORTION OF THE ABOVE DESCRIBED VARYING WIDTH STRIP OF LAND FROM THE POINT O TO THE END THEREOF SHALL BE 24.00 FEET WIDE, LYING 12.00 FEET ON EACH SIDE OF THE ABOVE DESCRIBED CENTER LINE.

THE SIDE LINES OF THE ABOVE DESCRIBED STRIP OF LAND SHALL BE PROLONGED OR SHORTENED SO AS TO TERMINATE AT THEIR POINTS OF INTERSECTION SO AS TO MAKE A CONTINUOUS EXTERIOR BOUNDARY OF SAID STRIP OF LAND, AND AT THE BEGINNING THEREOF SO AS TO TERMINATE IN THE SOUTHERLY LINE OF SAID BASTANCHURY ROAD.

PARCEL 2.1

A STRIP OF LAND 10.00 FEET WIDE, LYING 5.00 FEET ON EACH SIDE OF THE FOLLOWING DESCRIBED CENTERLINE:

BEGINNING AT THE ABOVE DESCRIBED POINT F; THENCE SOUTH 89° 53' 19" EAST 21.00 FEET.

EXCEPT THEREFROM THAT PORTION THEREOF WITHIN THE ABOVE DESCRIBED PARCEL 2.

PARCEL 2.2

A STRIP OF LAND 10.00 FEET WIDE, LYING 5.00 FEET ON EACH SIDE OF THE FOLLOWING DESCRIBED CENTERLINE:

BEGINNING AT THE ABOVE DESCRIBED POINT G; THENCE SOUTH 89° 53' 19" EAST 21.00 FEET.

EXCEPT THEREFROM THAT PORTION THEREOF WITHIN THE ABOVE DESCRIBED PARCEL 2.

PARCEL 2.3

A STRIP OF LAND 10.00 FEET WIDE, LYING 5.00 FEET ON EACH SIDE OF THE FOLLOWING DESCRIBED CENTERLINE:

BEGINNING AT THE ABOVE DESCRIBED POINT H; THENCE SOUTH 00° 06' 41" WEST 21.00 FEET.

EXCEPT THEREFROM THAT PORTION THEREOF WITHIN THE ABOVE DESCRIBED PARCEL 2.

PARCEL 2.4

A STRIP OF LAND 10.00 FEET WIDE, LYING 5.00 FEET ON EACH SIDE OF THE FOLLOWING DESCRIBED CENTERLINE:

BEGINNING AT THE ABOVE DESCRIBED POINT I; THENCE SOUTH 00° 06' 41" WEST 23.00 FEET.

EXCEPT THEREFROM THAT PORTION THEREOF WITHIN THE ABOVE DESCRIBED PARCEL 2.

PARCEL 2.5

A STRIP OF LAND 20.00 FEET WIDE, LYING 10.00 FEET ON EACH SIDE OF THE FOLLOWING DESCRIBED CENTERLINE:

BEGINNING AT THE ABOVE DESCRIBED POINT J; THENCE NORTH 00° 06' 41" EAST 219.61 FEET TO THE SOUTHERLY LINE OF THE ABOVE DESCRIBED PARCEL 1.

EXCEPT THEREFROM THOSE PORTIONS THEREOF WITHIN THE ABOVE DESCRIBED PARCEL 1, PARCEL 2, AND PARCEL 1.3.

PARCEL 2.6

A STRIP OF LAND 10.00 FEET WIDE, LYING 5.00 FEET ON EACH SIDE OF THE FOLLOWING DESCRIBED CENTERLINE:

BEGINNING AT THE ABOVE DESCRIBED POINT K; THENCE SOUTH 00° 06' 41" WEST 21.00 FEET.

EXCEPT THEREFROM THAT PORTION THEREOF WITHIN THE ABOVE DESCRIBED PARCEL 2.

PARCEL 2.7

A STRIP OF LAND 26.00 FEET WIDE, LYING 13.00 FEET ON EACH SIDE OF THE FOLLOWING DESCRIBED CENTERLINE:

BEGINNING AT THE ABOVE DESCRIBED POINT L; THENCE NORTH 44° 53' 18" WEST 187.00 FEET TO A POINT HEREBY DESIGNATED AS POINT Y; THENCE NORTH 44° 53' 18" WEST 254.73 FEET TO THE SOUTHEASTERLY LINE OF THE ABOVE DESCRIBED PARCEL 1.

EXCEPT THEREFROM THOSE PORTIONS THEREOF WITHIN THE ABOVE DESCRIBED PARCELS 1 AND 2

PARCEL 2.8

A STRIP OF LAND 23.00 FEET WIDE, LYING 8.00 FEET NORTHEASTERLY AND 15.00 FEET SOUTHWESTERLY OF THE FOLLOWING DESCRIBED CENTERLINE:

BEGINNING AT THE ABOVE DESCRIBED POINT Q; THENCE SOUTH 44° 52' 34" EAST 23.00 FEET.

EXCEPT THEREFROM THAT PORTION THEREOF WITHIN THE ABOVE DESCRIBED PARCEL 2.

PARCEL 2.9

A STRIP OF LAND 10.00 FEET WIDE, LYING 5.00 FEET ON EACH SIDE OF THE FOLLOWING DESCRIBED CENTERLINE:

BEGINNING AT THE ABOVE DESCRIBED POINT R; THENCE SOUTH 00° 06' 41" WEST 27.00 FEET.

EXCEPT THEREFROM THAT PORTION THEREOF WITHIN THE ABOVE DESCRIBED PARCEL 2.

PARCEL 2.10

A STRIP OF LAND 10.00 FEET WIDE, LYING 5.00 FEET ON EACH SIDE OF THE FOLLOWING DESCRIBED CENTERLINE:

BEGINNING AT THE ABOVE DESCRIBED POINT S; THENCE NORTH 00° 06' 41" EAST 16.00 FEET.

EXCEPT THEREFROM THAT PORTION THEREOF WITHIN THE ABOVE DESCRIBED PARCEL 2.

PARCEL 2.11

A STRIP OF LAND 24.00 FEET WIDE, LYING 12.00 FEET ON EACH SIDE OF THE FOLLOWING DESCRIBED CENTERLINE:

BEGINNING AT THE ABOVE DESCRIBED POINT T; THENCE NORTH 00° 06' 41" EAST 101.06 FEET TO THE SOUTHERLY LINE OF SAID BASTANCHURY ROAD .

THE SIDE LINES OF THE ABOVE DESCRIBED STRIP OF LAND SHALL BE PROLONGED OR SHORTENED AT THE END THERE OF SO AS TO TERMINATE IN THE SOUTHERLY LINE OF SAID BASTANCHURY ROAD.

EXCEPT THEREFROM THAT PORTION THEREOF WITHIN THE ABOVE DESCRIBED PARCEL 2.

PARCEL 2.12

A STRIP OF LAND OF VARYING WIDTHS THE CENTERLINE OF WHICH IS DESCRIBED AS FOLLOWS:

BEGINNING AT THE ABOVE DESCRIBED POINT P; THENCE WEST 22.36 TO A POINT HEREBY DESIGNATED AS POINT U; THENCE NORTH 44° 53' 18" WEST 96.33 FEET TO THE SOUTHEASTERLY LINE OF THE ABOVE DESCRIBED PARCEL 1.

THAT PORTION OF THE ABOVE DESCRIBED VARYING STRIP OF LAND FROM POINT P TO POINT U SHALL BE 28.00 FEET WIDE, LYING 14.00 FEET ON EACH SIDE OF THE ABOVE DESCRIBED CENTER LINE.

THAT PORTION OF THE ABOVE DESCRIBED VARYING STRIP OF LAND FROM THE POINT U TO THE SOUTHEASTERLY LINE OF THE ABOVE DESCRIBED PARCEL 1 SHALL BE 16.00 FEET WIDE, LYING 8.00 FEET ON EACH SIDE OF THE ABOVE DESCRIBED CENTERLINE.

THE SIDE LINES OF THE ABOVE DESCRIBED STRIP OF LAND SHALL BE PROLONGED OR SHORTENED SO AS TO TERMINATE AT THEIR POINTS OF INTERSECTION SO AS TO MAKE A CONTINUOUS EXTERIOR BOUNDARY OF SAID STRIP OF LAND.

EXCEPT THEREFROM THOSE PORTIONS THEREOF WITHIN THE ABOVE DESCRIBED PARCELS 1 AND 2

PARCEL 2.13

A STRIP OF LAND 36.00 FEET WIDE, LYING 18.00 FEET ON EACH SIDE OF THE FOLLOWING DESCRIBED CENTERLINE:

BEGINNING AT THE ABOVE DESCRIBED POINT Y; THENCE NORTH 45° 06' 42" EAST 68.00 FEET.

EXCEPT THEREFROM THAT PORTION THEREOF WITHIN THE ABOVE DESCRIBED PARCEL 2.7

PARCEL 2.14

A STRIP OF LAND 10.00 FEET WIDE, LYING 5.00 FEET ON EACH SIDE OF THE FOLLOWING DESCRIBED CENTERLINE:

BEGINNING AT THE ABOVE DESCRIBED POINT V; THENCE NORTH 44° 53' 18" WEST 21.00 FEET.

EXCEPT THEREFROM THAT PORTION THEREOF WITHIN THE ABOVE DESCRIBED PARCEL 2.

PARCEL 2.15

A STRIP OF LAND 10.00 FEET WIDE, LYING 5.00 FEET ON EACH SIDE OF THE FOLLOWING DESCRIBED CENTERLINE:

BEGINNING AT THE ABOVE DESCRIBED POINT W; THENCE WEST 37.00 FEET.

EXCEPT THEREFROM THAT PORTION THEREOF WITHIN THE ABOVE DESCRIBED PARCEL 2.

PARCEL 2.16

A STRIP OF LAND 10.00 FEET WIDE, THE SOUTHERLY LINE OF WHICH IS DESCRIBED AS FOLLOWS:

BEGINNING AT THE ABOVE DESCRIBED POINT O; THENCE SOUTH 89° 59' 29" EAST 32.00 FEET.

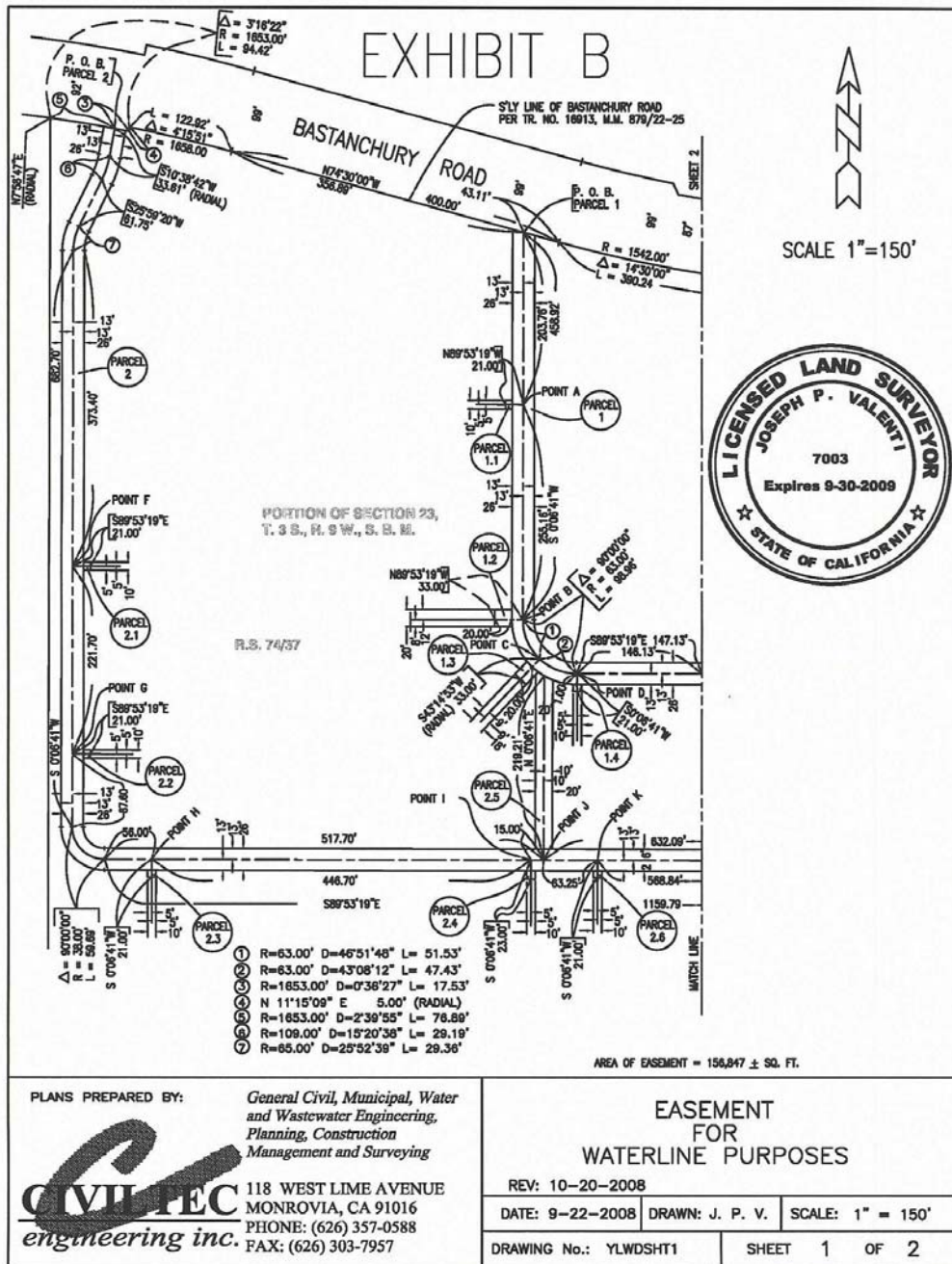
EXCEPT THEREFROM THAT PORTION THEREOF WITHIN THE ABOVE DESCRIBED PARCEL 2.

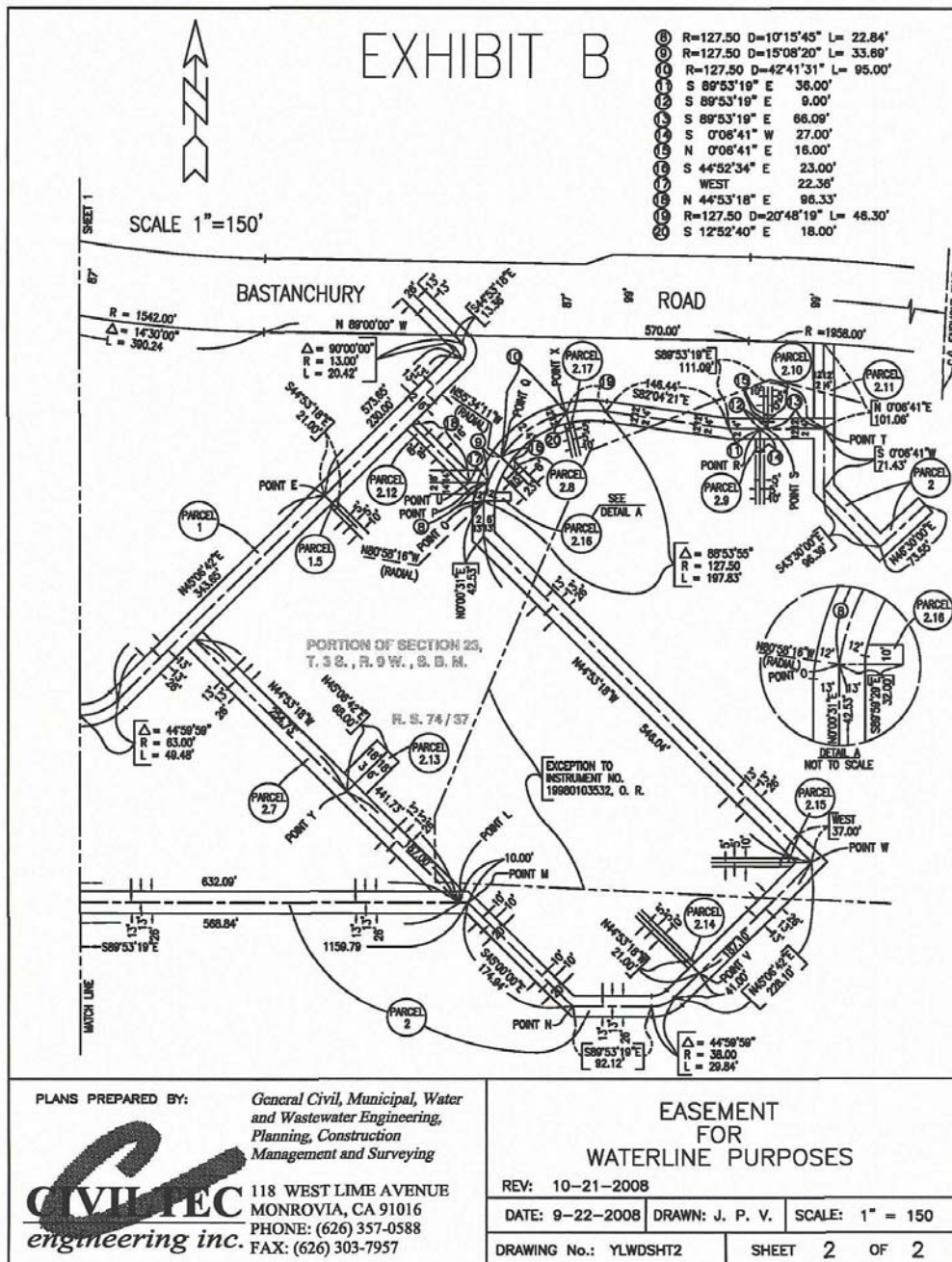
PARCEL 2.17

A STRIP OF LAND 10.00 FEET WIDE, LYING 5.00 FEET ON EACH SIDE OF THE FOLLOWING DESCRIBED CENTERLINE:

BEGINNING AT THE ABOVE DESCRIBED POINT X; THENCE SOUTH 12° 52' 40" EAST 18.00 FEET.

EXCEPT THEREFROM THAT PORTION THEREOF WITHIN THE ABOVE DESCRIBED PARCEL 2.





INDEPENDENT CONTRACTOR AGREEMENTS – EDUCATIONAL SERVICES

1. California Weekly Explorer, Inc. Provider of history assemblies at Van Buren Elementary School, March 2-31, 2009; budgeted gift funds, NTE \$2,560.
2. California Weekly Explorer, Inc. Provider of history assemblies at Rose Drive Elementary School, June 3, 2009; budgeted gift funds, NTE \$640.
3. California Weekly Explorer, Inc. Presenter of history assemblies at Rose Drive Elementary School, June 2, 2009; budgeted gift funds, NTE \$640.
4. Deana Hippiie Presenter of "Teaching Writing to Meet the California State Standards" inservice for secondary teachers, December 16, 2008; budgeted categorical funds, NTE \$1,500.
5. California Weekly Explorer, Inc. Presenter of history assemblies at Wagner Elementary School, January 21 to June 4, 2009; budgeted gift funds, NTE \$1,920.
6. Imagination Machine Presenter of language arts assemblies at Van Buren Elementary School, February 6, 2009; budgeted gift funds, NTE \$1,205.
7. Meet the Masters Presenter of art assemblies at Rio Vista Elementary School, November 17, 2008 to March 30, 2009; budgeted gift funds, NTE \$1,535.
8. Meet the Masters Presenter of art assemblies at Van Buren Elementary School, December 3, 2008 to March 18, 2009; budgeted gift funds, NTE \$2,490.
9. Orange County Performing Arts Center Presenter of fine arts assemblies at Ruby Drive Elementary School, March 20, 2009; budgeted gift funds, NTE \$725.
10. Orange County Performing Arts Center Presenter of fine arts assemblies at Ruby Drive Elementary School, January 16, 2009; budgeted gift funds, NTE \$1,100.
11. University of California, Santa Barbara Presenter of "Building a Strong Year-Long Writing Program" inservice for teachers, November 12-13, 2008; budgeted categorical funds, NTE \$2,660.
12. Russo, Fleck and Associates Provider of inservice on Occupational/Physical Therapy services for special education staff, August 27, 2008; budgeted special education funds, NTE \$300.

- | | |
|--|--|
| 13. Caryn Lewis, Educational Consultant | Provider of ongoing language arts professional development in alignment with district/site goals, September 10, 2008 to March 25, 2009; budgeted categorical funds, NTE \$20,400. |
| 14. Matsiko Children's Choir | Presenter of music assemblies at Tynes Elementary School, November 6, 2008; no cost to district. |
| 15. Orange County Performing Arts Center | Presenter of social science assembly at Travis Ranch School, January 22, 2009; budgeted gift funds, NTE \$425. |
| 16. Mobile Ed. Productions | Presenter of social science assembly at Travis Ranch School, January 20, 2009; budgeted gift funds, NTE \$395. |
| 17. David Ghoogasian | Presenter of "Translating Brain Research Into Classroom Practice" and "Differentiated Instruction" inservices for teachers, November 19 to December 10, 2008; budgeted categorical funds, NTE \$3,900. |
| 18. Language Circle Enterprises | Presenter of written expression and linguistic strands inservices for teachers, November 12, 2008 to February 27, 2009; budgeted categorical funds, NTE \$4,800. |
| 19. Jamie Kough, Art Fusion | Presenter of art assemblies at Glenknoll Elementary School, November 18, 2008 to May 22, 2009; budgeted gift funds, NTE \$950. |
| 20. California Weekly Explorer, Inc. | Presenter of social science assemblies at Rio Vista Elementary School, November 24-26, 2008; budgeted gift funds, NTE \$1,121. |
| 21. Sheryl D. Johnson, Adventures in Astronomy | Presenter of science assemblies at Linda Vista Elementary School, March 5, 2009; budgeted gift funds, NTE \$725. |

SPECIAL EDUCATION CONTRACTS

1. Alton School
Amend authorization to pay for Nonpublic, Nonsectarian School/Agency services due to increase in student count, July 1, 2008 to June 30, 2009; previously board approved for \$80,000; revised total budgeted special education funds, NTE \$145,000.
2. Autism Spectrum Therapies
Master Contract for Nonpublic, Nonsectarian School/Agency services, July 1, 2008 to June 30, 2009; authorization to pay special education funds, NTE \$1,500.
3. Comprehensive Educational Services, Inc., dba ACES
Amend authorization to pay for Nonpublic, Nonsectarian School/Agency services due to increase in student count, July 1, 2008 to June 30, 2009; previously board approved for \$17,000; revised budgeted total special education funds, NTE \$59,000.
4. Cinnamon Hills School
Amend authorization to pay for Nonpublic, Nonsectarian School/Agency services due to increase in student count, July 1, 2008 to June 30, 2009; previously board approved for \$40,000; revised budgeted total special education funds, NTE \$72,000.

EXTENDED FIELD TRIPS

1. Esperanza High School Junior State of America Fall State
Convention, November 15-16, 2008 in Irvine,
California.
2. Valencia High School Junior State of America Fall State
Convention, November 15-16, 2008 in Irvine,
California.
3. Esperanza High School Hawaii Invitational, April 11-19, 2009 in
Honolulu, Hawaii.

GIFTS

- a. Check in the amount of \$132.75 from Target Take Charge of Education Program to be used for instructional purposes at Brookhaven Elementary School.
- b. Check in the amount of \$200 from Discovering Science Company to be used for instructional purposes at Bryant Ranch School.
- c. Check in the amount of \$1,236.29 from Target Take Charge of Education Program to be used for instructional purposes at Esperanza High School.
- d. Checks totaling \$3,100 from Fairmont PTA to be used for assemblies at Fairmont Elementary School.
- e. Check in the amount of \$873.93 from Target Take Charge of Education Program to be used for instructional purposes at Fairmont Elementary School.
- f. Checks totaling \$7,620 from Glenknoll PTA to be used for assemblies at Glenknoll Elementary School.
- g. Check in the amount of \$375.25 from Target Take Charge of Education Program to be used for instructional purposes at Glenknoll Elementary School.
- h. Check in the amount of \$155.43 from Target Take Charge of Education Program to be used for instructional purposes at Glenview Elementary School.
- i. Check in the amount of \$1,000 from Golden PTA to be used for assemblies at Golden Elementary School.
- j. Band drum kit from Steve Hill to be used for music instruction at Kraemer Middle School.
- k. Hooked on Phonics program from Rosie Pierro to be used for the SDC Preschool at Linda Vista Elementary.
- l. Checks totaling \$3,612.50 from Linda Vista PTA to be used for assemblies at Linda Vista Elementary School.
- m. Digital camera from Mick Grethe to be used where needed at Wagner Preschool.
- n. Check in the amount of \$238.18 from Target Take Charge of Education Program to be used for instructional purposes at Linda Vista Elementary School.
- o. Check in the amount of \$191.10 from Target Take Charge of Education Program to be used for instructional purposes at Morse Elementary School.
- p. Check in the amount of \$199 from Target Take Charge of Education Program to be used for instructional purposes at Rose Drive Elementary School.
- q. Checks totaling \$5,255 from Travis Ranch PTA to be used for assemblies and field trips for Travis Ranch School.
- r. Check in the amount of \$200 from Cantrell Photography, Inc. to be used for instructional purposes at Travis Ranch School.
- s. Kodak screen from Ken and Pat Eppens to be used for the art program at Travis Ranch School.
- t. Checks totaling \$150 from Edison Gifts to be used for instructional purposes at Tuffree Middle School.
- u. HP Deskjet printer and accessories from Joan Lewis to be used as needed at Valencia High School.

CLASSIFIED PERSONNEL REPORT**Employ**

Lindsay Aguilar, Spec. Educ. Aide II, Tynes, 09/18/08
Amy Arellano, Bilingual Instructional Aide, Travis Ranch, 10/06/08
Sue Bringhurst, Elementary Library/Media Technician, Ruby Drive, 09/16/08
Yanina Camarillo, Spec. Educ. Aide III, Glenknoll, 09/22/08
Brian Cordova, Spec. Educ. Aide I, Ruby Drive, 09/23/08
Melinda Giaimo, Spec. Educ. Aide I, Tuffree Middle, 09/18/08
Courtney Hetland, Child Care Teacher I, Lakeview CCC, 10/01/08
Chenne Jenkins, Child Care Teacher I, Woodsboro CCC, 10/01/08
Courtni Laughlin, Spec. Educ. Aide II, Glenview, 09/15/08
Encanto Ledesma, Bilingual School Readiness Aide, Rio Vista, 09/08/08
Brenda Thomas, Spec. Educ. Aide II, Yorba Linda Middle, 10/08/08
Jodi Williams, Spec. Educ. Aide II, Rose Drive, 09/29/08
Morgan Williams, Spec. Educ. Aide II, Wagner, 09/16/08

Short Term

Daisy Bennett, Clerk II, Technology, NTE 80 hrs., 07/01/08
Jessica Chan, AVID Tutor, Valadez Middle, NTE 4 hrs./wk., 10/03/08
Charity Biddix, Noon Supv., Melrose, 10/08/08 – 06/14/09
Marisol Ceballos, Noon Supv., Melrose, NTE 15 hrs., 09/25/08 – 06/11/09
Erica Diaz, Personnel Technician, Personnel Services, NTE 8 hrs., 07/11/08 – 07/30/08
Ayerim Flores, AVID Tutor, Valadez Middle, NTE 4 hrs./wk., 10/03/08
Marcie Gardner, Noon Supv., Sierra Vista, 09/24/08 – 06/15/09
Precious Germaine, Sr. Library/Media Technician, Esperanza, NTE 225 hrs., 08/01/08 – 06/11/09
Lupe Hurtado, Noon Supv., Melrose, 09/29/08 – 10/22/08
Lupe Hurtado, Noon Supv., Melrose, NTE 15 hrs., 09/25/08 – 06/11/09
Stephanie Inzunza, Noon Supv., Rose Drive, 10/08/08 – 06/15/09
Candy Julian, Noon Supv., Bernardo Yorba Middle, NTE 2 hrs./day, 10/08/08 – 06/15/09
Trisha Ladd, Computer Instructional Specialist, Sierra Vista, NTE 4 hrs., 09/01/08 – 09/30/08
Adele Lightfoot, Noon Supv., Brookhaven, 09/02/08 – 06/15/09
Kelly Mahood, Spec. Educ. Aide I, Rose Drive, NTE 144 hrs., 09/29/08 – 11/26/08
Jessica Maas, Spec. Educ. Aide III, Glenknoll, NTE 20 hrs., 09/22/08 – 11/26/08
Basma Mezied, Noon Supv., Glenview, 10/06/08 – 06/11/09
Carlos Pasillas, Spec. Educ. Aide II, George Key, NTE 25 hrs., 09/30/08 – 11/26/08
Raquel Pasillas, Spec. Educ. Aide II, George Key, NTE 25 hrs., 09/16/08 – 11/26/08
Yvette Reta, Spec. Educ. Aide III, Brookhaven, NTE 36 hrs., 09/30/08 – 11/26/08
Lesley Robbins, Handicap Technician, Special Education, NTE 14 hrs., 08/18/08- 08/20/08
Brenda Rogers, Noon Supv., Wagner, 09/26/08 – 06/11/09
Kristen Ryder, Spec. Educ. Aide II, Esperanza, NTE 7.5 hrs./day, 10/01/08 – 10/06/08
Sarah Sasser, Spec. Educ. Aide II, George Key, NTE 25 hrs., 09/29/08 – 11/26/08
Sarah Soberanes, Spec. Educ. Aide II, George Key, NTE 40 hrs., 09/15/08 – 01/26/09
Karen Tapia, Spec. Educ. Aide III, Tynes, NTE 40 hrs., 10/02/08 – 11/26/08
Amy Troup, Computer Instructional Specialist, Wagner, NTE 4 hrs., 09/01/08 – 09/30/08
Casey Valdez, Spec. Educ. Aide II, George Key, NTE 25 hrs., 10/01/08 – 11/26/08
Yolanda Velasquez, Spec. Educ. Aide II, Tynes, NTE 51 hrs., 09/22/08- 11/26/08
Donna Westergaard, Spec. Educ. Aide II, Sierra Vista, NTE 2.75 hrs., 09/02/08 – 09/15/08
Donna Westly, Food Services Manager, Food Services, NTE 75 hrs., 08/20/08 – 08/30/08
John Wirkus, Custodian, Various, Maintenance & Operations, NTE 200 hrs., 09/10/08 – 06/30/09
Vanessa Zepeda, Spec. Educ. Aide III, Brookhaven, NTE 35 hrs., 10/01/08 – 06/30/09

Substitutes

Lindsay Aguilar, Spec. Educ. Aide I/II/III, All Sites, 09/18/08
Julie Beith, Clerk II, Bryant Ranch, 09/15/08 – 10/03/08
Yanina Camarillo, Spec. Educ. Aide I/II/III, All Sites, 09/22/08
Brian Cordova, Spec. Educ. Aide I/II, All Sites, 09/23/08
Colleen Gallant, Noon Supv., Brookhaven, 09/15/08
Marcie Gardner, Noon Supv., Sierra Vista, 09/24/08
Melinda Giaimo, Spec. Educ. Aide I/II, All Sites 09/18/08
Candy Julian, Noon Supv., Travis Ranch, 10/08/08
Suzanne Kammer, Spec. Educ. Aide III, All Sites, 09/10/08
Janice Klewer, School Secretary I, Golden, 09/15/08
Courtnei Laughlin, Spec. Educ. Aide II, All Sites, 09/15/08
Jessica Maas, Clerk I/School Secretary I, Glenknoll, 10/06/08
Blanca Macias, Child Care Teacher I, 10/01/08 – 06/30/09
Diane Mcilvene, Spec. Educ. Aide I/II, All Sites, 10/01/08
Melody Moreno, Spec. Educ. Aide I/II, All Sites, 10/06/08
Grace Pena, Spec. Educ. Aide I/II, All Sites, 09/02/08
Erin Schriever, Clerk I/Clerk II/Attendance Clerk/School Secretary, Travis Ranch, 09/02/08
Sara Sperling, Spec. Educ. Aide I/II, All Sites, 10/06/08
Dawn Tagaloe, Spec. Educ. Aide I/II/III, All Sites, 10/08/08
Anna Valencia, Spec. Educ. Aide I/II, All Sites, 09/09/08
Robin Walden, Noon Supv., Tynes, 10/01/08
Mary Jane Watt, Secretary II, Superintendent's Office, 09/02/08

Short Term/SubstitutesChild Care Program: Child Care Teacher I; Student Mother Program Aide, All SiteShort Term: NTE 250 hrs., Substitute, NTE 8 hrs., All Sites

Cheryl Bailey, 10/08/08 – 06/30/09
Sara Blasco, 10/10/08 – 06/30/09
Judith Dailey, 10/08/08 – 06/30/09
Jason Shumski, 10/15/08 – 06/30/09

Status Change

Mary Adams, Director, Child Care, NOCCCD, 07/01/08
Maritza de Carrillo, Spec. Educ. Aide II, Mabel Paine, 10/01/08
Teresa Donovan, Spec. Educ. Aide I, Mabel Paine, 10/01/08
Chris Mendez, Spec. Educ. Aide II, Yorba Linda Middle, 09/30/08
Alejandra Quintero, Clerk I, Valencia, 09/29/08
Linda Sandoval, Bilingual Elementary Library/Media Technician, Rio Vista, 09/22/08

Walk-on Coaches

Brianne Allard, Dance, Esperanza, 09/01/08 – 05/31/09
Paulina Ramirez, Dance, Valadez Middle, 09/01/08 – 06/30/09

Resignations

Salvador Cruz, Spec. Educ. Aide II, Valencia/Esperanza, 10/04/08
Holly Harris, Spec. Educ. Aide III, Glenknoll, 10/08/08
Heidi Kawaja, Spec. Educ. Aide I, Van Buren, 10/10/08
Rosemary Kim, Child Care Teacher I, Golden, 10/07/08
Julie Nibali, Instructional Aide, Travis Ranch, 06/13/08
Norma Perez, Child Care Infant Aide, School Readiness, 10/07/08

CERTIFICATED PERSONNEL REPORT**Leaves of Absence**

Suzanne Bilhartz, Teacher, Lakeview, Maternity Leave, 09/18/08-12/05/08

Alina Filipescu, Teacher, Kraemer, Maternity Leave, 10/16/08-12/05/08

Ana Zamora-Lopez, Teacher, Morse, Maternity Leave, 09/26/08-12/22/08

Change of Status

Veronica Luna, Teacher, Ruby Drive, 100% contract, 2008-2009 School Year

Keri Walters, High School Athletic Director, Esperanza, 2008-2009 School Year

Corrections

Amy Blank, Kraemer, After School Program, NTE \$1500.00, 2008-2009 School Year (Original Board Approval 10/14/08, NTE \$1100.00)

Hourly Positions

Sharon Farrell, Pupil Services, Home/Hospital Instructor, \$27/Hr., 10/01/08-06/11/09

Julie Jackson, Adult Ed., Curriculum Prep., \$25/Hr., NTE 25 Hrs., Instruct, \$27/Hr., NTE 15 Hrs/Wk., 10/13/08-01/23/09

Mary Jacobs, Adult Ed., Curriculum Prep., \$25/Hr., NTE 15 Hrs., Instruct, \$27/Hr., NTE 12 Hrs/Wk., 10/13/08-01/23/09

Vasiliki Marshall, Pupil Services, Home/Hospital Instructor, \$27/Hr., 10/01/08-06/11/09

Joanne Shoup, Adult Ed., Curriculum Prep., \$25/Hr., NTE 25 Hrs., Instruct, \$27/Hr., NTE 12 Hrs/Wk., 10/01/08-01/23/09

Extra Duty Assignment

Christian Collins, Special Education, Pro Act Trainer, \$27/Hr., NTE 18 Hrs., 08/18/08-08/20/08

Daniel Eliot, Educational Services, Carl Perkins Coordinator, \$25/Hr., NTE 269 Hrs., 2008-2009 School Year

Guillermina Flores-Magana, SLI Coordinator, \$25/Hr., NTE 80 Hrs., 2008-2009 School Year

Guillermina Flores-Magana, SLIP Coordinator, \$25/Hr., NTE 23 Hrs., 2008-2009 School Year

Roseann Kosulandich, Esperanza, Tutoring Coordinator, \$27/Hr., NTE 40 Hrs, 2008-2009 School Year

Jon Matson, Educational Services, Assessment Center, \$25/Hr., NTE 160 Hrs., 2008-2009 School Year

Alma Padilla, Educational Services, Assist w/Admin. Duties, \$25/Hr., NTE 100 Hrs., 2008-2009 School Year

Adrienne Trontz, Educational Services, Asst. Title I Principal, Per Diem, NTE 8 Days, 2008-2009 School Year

Nancy Watkins, Valencia, Community Service, \$25/Hr., NTE 200 Hrs., 2008-2009 School Year

Cyndi Watson, Tuffree, Noon Duty Supv., \$11/Hr., NTE 5 Hrs/Wk., 2008-2009 School Year

Candice Wynn, Educational Services, Attend BTSA Academy, \$25/Hr., NTE 10 Hrs., 2008-2009 School Year

Tynes, Classroom Move, Modernization, \$25/Hr., NTE 8 Hrs., 04/01/08-08/31/08

Faith Croswell

Susan Christensen

Patricia Wong

Cheryl Workman

Mary Larson

Mary McMahon

Pam Cyrus

Carol Heath

Kathryn Maucher

Christine Pizzo-Spina

Tynes, Classroom Move, Modernization, \$25/Hr., NTE 8 Hrs., 04/01/08-08/31/08, Continued

Stephanie Dempsey
Maria Paz Campoy
Jannis Frederick
Jana Howard
Nicole Killian
Stacy Hawley
Suzanne Davidson
Shauna Real
Linda Maxwell-Jordan
Katherine Paniagua
Jodie Hawkins
Linda Moore
Karen Dunnuck
Violet Hobbs
Barbara Nypert
Shelly Worrall
Athiah Chaudry
Barbara Wilson
Beatriz Suarez
Pamela Munoz
Willis Cole

Travis Ranch, Saturday Work, \$25/Hr., 2008-2009 School Year

Jennifer Bremer, NTE 10 Hrs.
Deborah De Rossett, NTE 10 Hrs.
Gabrielle Stephenson, NTE 7 Hrs.

Esperanza, PSAT Proctor, \$25/Hr., NTE 6 Hrs., 10/01/08-11/01/08

Richard Cadra
Holly Clarke
Alison Costello
Joseph Cusick
Tempa Davidson
Brad Davis
Colin Domene
Sharon Farrell
Amber Ferris
Sue Gehringer
Jason Goettsche
Virginia Johns
Rey Lejano
Suzanne Munsell
Kressler Nguyen
Kim Peck
Robert Peck
Jennifer Pilkenton
Stephanie Shulman
Rosalind Slack
Gina Susaeta
Dave Tennant
Linda Yakzan

Valencia, After School Detention, \$27/Hr., 2008-2009 School Year

Craig Miller

James Sharkey

Yorba Linda High, Equipment/Supplies Coordinator, \$25/Hr., NTE 40 Hrs., 08/01/08-10/01/08

Connie Grosse

Marcus Hill

Educational Services, Additional Support & Coverage, \$25/Hr., NTE 7.5 Hrs/Wkly, 09/29/08-01/31/09

Patricia Nitzel

Deborah Sintov

Educational Services, Facilitator Mtgs/Trainings, \$25/Hr., NTE 6 Hrs., 2008-2009 School Year

Guillermina Flores-Magana

Jamie Jauch

Veronica Luna

Kathy Malone

Rodrigo Martinez, NTE 2 Hrs.

Diana McKibben

Soledad Rossetter

Don Shaffer

Stephanie Valdez-Schrader

Educational Services, ELD Presentation/Data Collection, \$25/Hr., NTE 5 Hrs., 2008-2009 School Year

Minerva Salazar

Shelley Waldrup

Personnel, Classroom Move, Modernization, \$25/Hr., NTE 5 Hrs., 10/02/08-10/09/08

Maureen Koenig

Debra Storing

Shannon Sweet

April Vanderhook

Special Education, Attend CPIN Workshop, \$27/Hr., NTE 10 Hrs., 2008-2009 School Year

Shani Boone

Diana Rincon

Tammy Thomsen

Special Education, Attend IEP Meetings, \$27/Hr., NTE 15 Hrs., 2008-2009 School Year

Patricia Davidson

Irene Patrick

Stipends

Janmarie Halliday, Tuffree, Yearbook Coordinator, NTE \$1600.00, 2008-2009 School Year

Susan Johnson, Valadez, Activities, NTE \$1600.00, 2008-2009 School Year

Kimberly Carlos, Tuffree, Activities Director, NTE \$1600.00, 2008-2009 School Year

Jeff Platt, Esperanza, Asst. Football Coach, NTE \$250.00, 08/18/08-11/14/08

Tuffree, Directors, NTE \$1600.00, 2008-2009 School Year

Carol Duralde, Choral

James Hahn, Instrumental

Tuffree, Technology Support, NTE \$1600.00, 2008-2009 School Year

Robert McLeish

Brendan Newberry

Valadez, Instructors, NTE \$1600.00, 2008-2009 School Year

Valerie Gabriel, Yearbook

Maria Ruvalcaba, Newspaper

Valadez, Instructors, NTE \$1600.00, 2008-2009 School Year

Sharon Edmondson, Choir

Jeff Evans, Orchestra

Valadez, Intramurals, NTE \$1600.00, 2008-2009 School Year

Dianne Avila

Timo Liu

El Dorado, Coaches, NTE \$250.00, 08/25/08-11/14/08

Aaron Acton

Richard Haulenbeck

Valencia, Department Chairs, 2008-2009 School Year

Tanya Borg, Math, NTE \$4819.00

Janelle Cid, ELD, NTE \$2410.00

Maria Ethington, World Language, NTE \$2410.00

Mike Guest, Business, NTE \$4819.00

Patricia Hadley, Fine Arts, NTE \$2410.00

Jamie Jauch, Reading, NTE \$2410.00

Dana Leon, Special Ed. RSP, NTE \$2410.00

Rita Phillips, Science, NTE \$4819.00

Jonna Robinson, Girls PE, NTE \$1205.00

Sue Sawyer, WEB Master, NTE \$2410.00

Grace Stanton, Performing Arts, NTE \$2410.00

Donna Thompson-Becker, Special Ed. SDC, NTE \$2410.00

John Van Dam, Boys PE, NTE \$1205.00

Julie Walker, Language Arts, NTE \$4819.00

Nancy Watkins, Social Science, NTE \$4819.00

Nancy Watkins, CAS, NTE \$1205.00

John Winek, Health, NTE \$1205.00

Valencia, Academic Coach, 2008-2009 School Year

Alyson Dixon, NTE \$783.00

Melinda Foote, NTE \$783.00

Fred Jenkins, NTE \$1566.00

Kay Kerby, NTE \$1566.00

Sam Myovich, NTE \$783.00

Board Approvals

<u>Name</u>	<u>Site</u>	<u>Subject</u>	<u>Education Code</u>
Yolanda Alonzo	Bernardo Yorba	Science	44258.2
Jeff Bailey	El Dorado High	Athletics	44258.7 (b)
Greg Beckman	El Dorado High	Athletics	44258.7 (b)
Donnie Bladow	El Dorado High	Athletics	44258.7 (b)
Georgianne Bryant	Valencia High	Athletics	44258.7 (b)
Wayne Carlson	El Dorado High	US History	44263
Mark Castillo	Valencia High	Athletics	44258.7 (b)
John Cyrus	El Dorado High	Athletics	44258.7 (b)
Myriam Dedrick	Kraemer Middle	Math	44256 (b)
Leila Deliman	Kraemer Middle	Language Arts	44256 (b)
Karen Esparza	Travis Middle	Social Science	44258.2
Nick Gerasimou	Esperanza High	Athletics	44258.7 (b)
John German	Valencia High	Athletics	44258.7 (b)
Steve Gullotti	El Dorado High	Athletics	44258.7 (b)
Ray Hale	Esperanza High	Earth Science	44263
Mark Honig	Esperanza High	Athletics	44258.7 (b)
Neil Kane	Kraemer Middle	Science	44258.2
Kurt Kersten	Esperanza High	Athletics	44258.7 (b)
Rey Lejano	Esperanza High	Athletics	44258.7 (b)
Greg Lynch	Esperanza High	Physics	44263
Bernard Ma	Valencia High	Athletics	44258.7 (b)
Robin Mackie	Valadez Middle	Spanish	44256 (b)
Mike Marujo	Valencia High	Sociology	44263
Mike Marujo	Valencia High	Athletics	44258.7 (b)
Mike Mc Call	Valencia High	Earth Science	44263
Robert Mc Leish	Tuffree Middle	Math	44256 (b)
Laura Moody	Travis Middle	Social Science	44258.2
Mike Morales	Kraemer Middle	Social Science	44258.2
Ryan Mounce	El Dorado High	Athletics	44258.7 (b)
Terry Nevin	El Dorado High	Geometry	44263
Mike Oberle	El Dorado High	Physics	44263
Isaac Owens	Esperanza High	Athletics	44258.7 (b)
Bill Pendleton	Esperanza High	Athletics	44258.7 (b)
Frank Perez	Esperanza High	Athletics	44258.7 (b)
Jason Pietsch	Esperanza High	Athletics	44258.7 (b)
Jennifer Pilkenton	Esperanza High	Chemistry	44263
Jeff Platt	Esperanza High	Athletics	44258.7 (b)
Cynthia Riley	Travis Middle	Language Arts	44256 (b)
Stephanie Roberts	El Dorado High	Physical Science	44263
Stephanie Roberts	El Dorado High	Athletics	44258.7 (b)
Gary Robinett	Valencia high	Government/World Religion	44263
Melissa Samson	Kraemer Middle	Math	44256 (b)

Board Approvals, Continued

Robert Schall	Kraemer Middle	Social Science	44258.2
Chris Schulz	Travis Middle	Math	44256 (b)
Stacy Shube	Esperanza High	Pep Squad	44258.7 (b)
Mathew Slevcove	Esperanza High	Athletics	44258.7 (b)
Debra Storing	YLMS	Science	44256 (b)
Debbie Titov	Esperanza High	Athletics	44258.7 (b)
Charles Titus	El Dorado High	Language Arts	44263
April Vanderhook	YLMS	Science	44256 (b)
Janice Weber	YLMS	Social Science	44256 (b)
Jocelyn Young	El Dorado High	Physical Science	44263

Substitute Teachers, 2008-2009 School Year

Michelle Blokzyl
 Lauren Brewer
 Manjit Charaia
 Susan Davila
 Amy DeQuintal
 Anna Gor
 Ruth Henderson
 Ramir Hernandez
 Chris Kernult
 Nina Kim
 Marrilee Kinsman
 Susan Lam
 Deanna Leach
 Priscilla Lopez
 Adam Luther
 Jocelyn Moussa
 Margaret O'Neal
 Laura Piper
 Bridget Somerville
 Nancy Sperry
 Tawny Sutherland
 Marie Valencia

Early Retirement Consultant

Lois Raffel

*Reimbursable

Instruction

6145.5-BP

STUDENT CLUBS AND ORGANIZATIONS

The Governing Board believes that curriculum related student organizations have an important place in students' lives by extending and reinforcing the instructional program. Student organizations also serve to honor outstanding student achievement and to enhance school spirit and students' sense of belonging.

In accordance with the provisions of the Federal Equal Access Act, the Governing Board maintains a limited open forum policy at the high school level. The Superintendent or his/her designee shall establish a process for school sponsorship and/or supervision of clubs at the high school level consistent with the Federal Equal Access Act and orderly operation of the schools. The Governing Board maintains a closed forum at the elementary and middle school levels related to access by individuals or groups which are not part of the District's approved curriculum. The only student clubs permitted at middle school and elementary school levels will be clubs which are directly related to the curriculum in accordance with Federal Equal Access guidelines.

Legal Reference:

EDUCATION CODE

48930-48938 Student organizations

49020 Athletic programs: Legislative intent

CODE OF REGULATIONS, TITLE 5 2 Definitions 5531

Supervision of extracurricular activities of pupils

U.S. CODE TITLE 20 4071-4074 The Equal Access Act

Policy adopted: 10/17/89

Policy revised: 7/23/96

Policy revised: 10/28/08

RESOLUTION NO. 11
Board of Education
Placentia-Yorba Linda Unified School District
Orange County, California

WHEREAS, the Burlington Northern Santa Fe Railroad owns and operates a major rail right of way through a significant portion of the district, which is expected to become increasingly utilized over the next two decades; and

WHEREAS, the District's school buses rely on over 200 crossings of these tracks daily to transport over 1,200 students to and from its schools; and

WHEREAS, local law enforcement, fire department, and other emergency responders rely on the ability to cross these tracks in a timely manner to safely provide their services; and

WHEREAS, increased use of the rail lines without any mitigating action will result in delays to the District's school bus routes, necessitating increased ride times and an increase in the costs to provide these services; and

WHEREAS, the City of Placentia has procured funding from federal and state sources for the purpose of mitigating the effects of the increase in rail traffic on the surrounding community;

NOW, THEREFORE, BE IT RESOLVED that the Board of Education of the Placentia-Yorba Linda Unified School District does hereby support the City of Placentia's efforts to mitigate the effects of the increased rail traffic through the District and its communities and consider design and engineering options that would minimize the disruption to the existing community while maximizing its funding opportunities.

AYES: Judy Miller, Carol Downey, Karin Freeman, Janice Wagner, Eric Padget

NOES: None

ABSENT: None

STATE OF CALIFORNIA)
)
COUNTY OF ORANGE)

I, Dennis M. Smith, Secretary of the Board of Education of the Placentia-Yorba Linda Unified School District of Orange County, California, hereby certify that the above and foregoing Resolution was duly and regularly adopted by said Board at a regular meeting thereof held on October 28, 2008, and passed by a unanimous vote of said Board.

IN WITNESS WHEREOF, I have set my hand this 28 day of October 2008.

Dennis M. Smith, Ed.D.
Secretary, Board of Education
Placentia-Yorba Linda Unified School District

DATE: October 28, 2008