

PLACENTIA-YORBA LINDA UNIFIED SCHOOL DISTRICT
1301 E. Orangethorpe Avenue
Placentia, CA

Minutes
Regular Meeting
Board of Education

4:30 p.m., Tuesday, August 24, 2010
District Educational Center
1301 E. Orangethorpe Avenue
Placentia, CA 92870

A Regular Meeting of the Board of Education of the Placentia-Yorba Linda Unified School District, called by Mrs. Carol Downey, President, in accordance with Government Code Sections 54950 et. seq., and Education Code Sections 35140 et seq., was called to order at 4:30 p.m., on Tuesday, August 24, 2010 at the District Educational Center, 1301 E. Orangethorpe Avenue, Placentia.

STUDY SESSION

1. Special Education Overview
2. District Capital Facilities Plan Update

CLOSED SESSION

Adjourned to Closed Session for the purpose of discussing matters expressly authorized by Government Code Sections 3549.1, 54956.8, 54956.95, 54957, and 54957.6 at 6:00 p.m.

REGULAR SESSION

Reconvened to Regular Session at 7:03 p.m.

PLEDGE OF ALLEGIANCE

ROLL CALL

Members Present: Mrs. Carol Downey, President
Mrs. Janice Wagner, Vice President
Mr. Eric Padget, Clerk
Mrs. Karin Freeman, Trustee
Mrs. Kim Palmer, Trustee
Dr. Dennis Smith, Secretary

PUBLIC HEARING

A Public Hearing was held relative to Resolution No. 7, Intent to Dedicate Easement to City of Anaheim for upgrades to electrical service at the Rio Vista Elementary School site.

Action: Carried
Ayes: 5
Noes: 0

Motion: Mr. Eric Padget
Second: Mrs. Janice Wagner

MINUTES

1. Approved the minutes of the Special Meeting of July 12, 2010.

Action: Carried
Ayes: 5
Noes: 0

Motion: Mrs. Karin Freeman
Second: Mr. Eric Padget

2. Approved the minutes of the Regular Meeting of July 13, 2010.

Action: Carried
Ayes: 5
Noes: 0

Motion: Mrs. Janice Wagner
Second: Mrs. Kim Palmer

RECOGNITION/PRESENTATIONS

None

PUBLIC COMMENT

None

STUDENT BOARD REPORT

None

SUPERINTENDENT'S REPORT

- In speaking about the opening of PYLUSD schools on Tuesday, September 7, 2010, the Superintendent announced the following new principals: Mr. Cary Johnson, El Dorado High School; Mrs. Deby Six, George Key School; Mrs. Cindy Rex, Sierra Vista Elementary School.
- Summer training for Interactive Classroom Technology was well attended with 38 trainings offered and 43 participants.
- The Superintendent spoke briefly regarding the State budget stalemate and the federal jobs bill.
- The Superintendent indicated the API scores will be released in September.

APPROVAL OF AGENDA

Approved the August 24, 2010 Board of Education agenda as amended and recommended by the Superintendent.

Action: Carried
Ayes: 5
Noes: 0

Motion: Mrs. Kim Palmer
Second: Mrs. Karin Freeman

CONSENT CALENDAR

1. Approved/ratified purchase orders in the following amounts: **(2009/2010)** – General Fund (01), \$12,907,427.87; Adult Education Fund (11), \$238.50; Child Development Fund (12), \$270,144.09; Cafeteria Fund (13), \$3,357,705.11; Deferred Maintenance Fund (14), \$94,837.25; Capital Facilities Fund (25), \$1,296,975.84; Building Fund Measure A (Series A) Fund (26), \$15,229,052.84; Building Fund Measure A (Series B) Fund (27), \$10,523,777.25; Building Fund Measure A (Series C) Fund (28), \$14,711,522.12; Building Fund Measure A (Series Q) Fund (29), \$14,704,960.26; School Facilities Fund / Prop 47 Fund (39), \$329,955.91; Special Reserve – Cap Outlay Fund (40), \$2,881,139.02; Capital Facilities Agency Fund (45), \$4,462.75; Insurance Workers Comp. Fund (68), \$326,735.94; Insurance Health & Welfare Fund (69), \$26,045,500.00; Insurance Property Loss Fund (70), \$255,125.73; Insurance Comp. Liab. Fund (82), \$586,247.1
2. Approved warrant listings in the following amounts: Warrant Registers #166001 through 184440 and #584113 through 584413; current year expenditures (June 27, 2010, through August 07, 2010) \$5,399,070.93; total prior year expenditures, \$10,118,702.21 (2009-2010); and payroll registers 12A & 1A, \$10,304,495.70 and 12B, 3,682,280.36
3. Authorized filing Form J-13A with the Orange County Superintendent of Schools for the emergency condition, September 8, 2009 – March 26, 2010.
4. Approved agreement with Vavrinek, Trine, Day & Co., LLP, to perform the district financial audit of the building (bond) funds for the fiscal years ending June 30, 2010 through June 30, 2013.
5. Accepted as complete the project(s) listed and authorized filing Notice(s) of Completion. (See attached.)
6. Approved Independent Contractor Agreements – Facilities & Planning – as listed in accordance with Board Policy No. 4124, Retention of Consultants. (See attached.)
7. Approved Change Order No. 1 to Purchase Order No. 003888, Bid No. 210-09 to Digital Network Group, Inc. for Installation of Smart Classroom Infrastructure at Kraemer Middle School, Project No. KRA-9220-9305-051.
8. Approved Change Order No. 1 to Purchase Order No. 003889, Bid No. 210-10 to Digital Network Group, Inc. for Installation of Smart Classroom Infrastructure at Morse Elementary School, Project No. MRS-9211-9303-051.
9. Approved Change Order No. 1 to Purchase Order No. 003890, Bid No. 210-12 to Digital Network Group, Inc. for Installation of Smart Classroom Infrastructure at Topaz Elementary School, Project No. TOP-9216-9302-051.
10. Approved Professional Services Agreement with Dolinka Group for Community Facility Development Services. Contract period July 1, 2010 to June 30, 2015. Contract No. 1011-03.
11. Approved Inspection Services Agreements with Reliant Testing Engineers, Inc. for geotechnical and material inspection, and testing services at Yorba Linda High School. Contract Periods June 1, 2010 through December 31, 2011. Contract No. 1011-04, Project No. YLH-9728-9301-074 and Contract No. 1011-05, Project No. YLH-9728-9302-071.
12. Approved Amendment No. 3 to the agreement for architectural services with HMC Architects for architectural and engineering (A&E) design services for George Key School HVAC Upgrades project. Contract No. 0708-49 Project No. KEY-9232-9302-031.

CONSENT CALENDAR, Continued

13. Approved Amendment No. 1 to the agreement for architectural services with MVE Institutional for architectural and engineering (A&E) design services for Administration Modernization/700 Building/Kitchen and HVAC project at Esperanza High School. Contract No. 0809-59. Project No. ESP-9223-9303-030. PO No. 910062.
14. Approved Amendment No. 1 to the agreement for architectural services with MVE Institutional for architectural and engineering (A&E) design services for Food Service and Restroom Modernization project at Travis Ranch Elementary School. Contract No. 0809-63. Project No. TRE-9730-9301-010. PO No. 910059.
15. Approved Resolution No. 7, Intent to Dedicate Easement to City of Anaheim for upgrades to electrical service at the Rio Vista Elementary School site. (See attached.)
16. Approved Independent Contractor Agreements – Educational Services - as listed in accordance with Board Policy No. 4124, Retention of Consultants. (See attached.)
17. Approved program agreement with Ocean Institute for Linda Vista Elementary School for field trip June 3, 2011 to Dana Point, California.
18. Approved Programmer Services Agreement with Quintessential School Systems for the 2010-2011 school year.
19. Approved agreement with Telecommunications of Orange County, KOCE-TV/KOCE-DT Foundation for classroom online video streaming from September 1, 2010 to August 31, 2011.
20. Approved agreement with Myers-Stevens & Toohey & Co., Inc. for Child Care accident coverage effective September 1, 2010 through August 31, 2011.
21. Approved waiver requested by El Camino High School student #12018 indicating that he/she has met the CAHSEE requirement for Mathematics.
22. Held by Board Member Karin Freeman.
23. Approved special education master contracts, individual services contracts and related services for the 2010-2011 school year. (Individual contracts on file) (See attached.)
24. Approved agreement for Provision of Positive Behavioral Intervention and Supports and Violence Prevention Education Services with Orange County Superintendent of Schools.
25. Approved Memorandum of Understanding, S.U.C.S.E.S.S. Project 2010-2011 between Northeast Orange County Special Education Local Plan Area and Orange County Superintendent of Schools.
26. Approved the student teaching agreement with California State University, Long Beach.
27. Approved the Education Specialist-Moderate/Severe Provisional Internship Permit for Rogelio Galvan.
28. Approved the Clinical Rehabilitation Waiver for Aileen Grant.
29. Approved the Clinical Rehabilitation Waiver for Adrienne Kupper.
30. Approves the Clinical Rehabilitation Waiver for Naila Qureshi.

CONSENT CALENDAR, Continued

31. Approved Classified Personnel Report. (See attached.)

32. Approved Certificated Personnel Report. (See attached.)

Approved the above listed recommendations, as amended.

Action: Carried
Ayes: 5
Noes: 0

Motion: Mr. Eric Padget
Second: Mrs. Janice Wagner

22. Accepted gifts as listed, such action being in compliance with Education Code Section 41032, and directed the Superintendent to send letters of appreciation. (See attached.)

Action: Carried
Ayes: 5
Noes: 0

Motion: Mrs. Karin Freeman
Second: Mrs. Janice Wagner

FACILITIES & PLANNING

Approved Schematic Design for the Multi-Purpose Room Expansion at Mabel Paine Elementary School and authorized the initiation of the next component of the process, Design Development.

Action: Carried
Ayes: 5
Noes: 0

Motion: Mr. Eric Padget
Second: Mrs. Karin Freeman

COMMUNICATIONS

2010 California School Boards Association Annual Education Conference and Trade Show Brochure

BOARD REPORT

1. Mrs. Kim Palmer indicated she had participated in the tour of construction projects that was provided during the month of July. She also attended the Autism Town Hall Meeting at Garden Grove Community Center on August 13, 2010.
2. Mrs. Freeman enjoyed the opportunity to attend the recent Management Symposium and found the presentation by the keynote speaker very beneficial. Mrs. Freeman sits on a committee at St. Jude which focuses on healthy communities and shared information from the Center for Disease Control (CDC) relative to wellness and recommendations for school food choices. She also distributed information from that meeting regarding childhood obesity. Mrs. Freeman shared information regarding the LVN program offered by the North Orange County Regional Occupational Program and the successes of a number of students participating in that program.
3. Mr. Eric Padget also toured the high school construction projects and indicated he had participated in the Management Symposium. He added that the speaker's presentation at the Symposium was very thought provoking.
4. Mrs. Janice Wagner thanked Mr. Mike Bailey, Executive Director of Facilities and Planning, for the tour he had provided her of district construction projects and expressed appreciation to the

Superintendent for hosting a reception for the Management Team. Mrs. Wagner inquired about the timing of construction for the district's new Performing Arts Center as related to the modernization of the Auditorium at Valencia High School. Mrs. Wagner provided information from the CDC relative to the recently declared whooping cough epidemic in the state of California and provided a copy of a magazine article regarding driving academies. Mrs. Wagner provided a brief overview of her responsibilities as a member of the nominating committee for the Orange County Committee on School District Organization, indicated nominations were now being solicited, and shared information relative to service on that committee. The statements of qualifications must be submitted by September 17, 2010.

5. Mrs. Carol Downey expressed appreciation to the Superintendent and his family for hosting the Management Team Reception and also found the speaker at the Management Symposium to be excellent.

ADJOURNMENT

Time: 7:32 p.m.

Mrs. Carol Downey adjourned the August 24, 2010 Board of Education meeting at 7:32 p.m.

Action: Carried
Ayes: 5
Noes: 0

Motion: Mrs. Karin Freeman
Second: Mr. Eric Padget

NEXT SCHEDULED MEETING

September 14, 2010

NOTICES OF COMPLETION

<u>P.O. Number</u>	<u>Contractor</u>	<u>Project</u>
3949	CCS Presentation Systems, Inc.	Rose Drive Elementary School Bid No. 209-19 Smart Classroom Unit Bid
811495	Cor-O-Van	Tynes Elementary School Bid No. 208-28 Relocation Services at Various Sites
811496	Cor-O-Van	Woodsboro Elementary School Bid No. 208-28 Relocation Services at Various Sites
811497	Cor-O-Van	Yorba Linda Middle School Bid No. 208-28 Relocation Services at Various Sites
811498	Cor-O-Van	Tuffree Middle School Bid No. 208-28 Relocation Services at Various Sites
3888	Digital Networks Group, Inc.	Kraemer Middle School Bid No. 210-09 Smart Classroom Infrastructure
3890	Digital Networks Group, Inc.	Topaz Elementary School Bid No. 210-12 Smart Classroom Infrastructure
3889	Digital Networks Group, Inc.	Morse Elementary School Bid No. 210-10 Smart Classroom Infrastructure
9181	Silver Creek	George Key School Bid No. 209-32 Portable Classroom Relocation Unit Bid
4723	Time & Alarm Systems, Inc.	Travis Middle School Bid No. 206-2 Low Voltage Bid
8909	American Modular Systems, Inc.	Valencia High School Lease, Leaseback Project

INDEPENDENT CONTRACTOR AGREEMENTS – FACILITIES & PLANNING

- 1. Rick Engineering Company Approve Independent Contractor Agreement for land surveying services at El Camino High School for Modernization project. Project No. ELC-9221-9301-030. Contract No. 1011-08. Contract period July 1, 2010 to December 31, 2010.

Building Fund Measure A (Series A) Fund (26) \$ 7,585.00
 Building Fund Measure A (Series B) Fund (27)
 Building Fund Measure A (Series C) Fund (28)
 Building Fund Measure A (Series Q) Fund (29)
 School Facilities Fund Prop 47 Fund (39)

- 2. John R. Byerly, Inc. Approve Independent Contractor Agreement for soils investigation services for sports lighting improvements for Yorba Linda High School New Construction Pool Facility project. Project No. YLH-9728-9301-074. Contract No. 1011-09. Contract period August 24, 2010 to December 31, 2010.

Building Fund Measure A (Series A) Fund (26) \$ 3,500.00
 Building Fund Measure A (Series B) Fund (27)
 Building Fund Measure A (Series C) Fund (28)
 Building Fund Measure A (Series Q) Fund (29)
 School Facilities Fund Prop 47 Fund (39)

- 3. John R. Byerly, Inc. Approve Independent Contractor Agreement for pavement design and soil/hot mix asphalt testing/inspection services for Kraemer Middle School Parking Lot project. Project No. KRA-9220-9302-030. Contract No. 1011-10. Contract period August 1, 2010 to December 31, 2010.

Building Fund Measure A (Series A) Fund (26) \$ 6,575.00
 Building Fund Measure A (Series B) Fund (27)
 Building Fund Measure A (Series C) Fund (28)
 Building Fund Measure A (Series Q) Fund (29)
 School Facilities Fund Prop 47 Fund (39)

**RESOLUTION NO 7
PLACENTIA-YORBA LINDA UNIFIED SCHOOL DISTRICT**

**RESOLUTION OF INTENT TO DEDICATE EASEMENT TO
CITY OF ANAHEIM**

WHEREAS, City of Anaheim ("City") has requested that Placentia-Yorba Linda Unified School District ("School District") dedicate an easement for upgrades to electrical services ("Easement") upon a portion of the Rio Vista Elementary School site. A legal description and a map depicting the location of the Easement are attached hereto as Exhibits "A" and "B," respectively, and are incorporated by reference herein; and

WHEREAS, pursuant to Education Code section 17556, the governing board of a school district (Board) may convey to a municipal corporation or political subdivision of the state any real property belonging to such school district; and

WHEREAS, pursuant to Education Section 17557, the Board must, prior to dedicating an easement, adopt a resolution declaring its intention to dedicate such easement in a regular open meeting by two-thirds (2/3) vote of its members; and

WHEREAS, pursuant to Education Code Section 17557, the Board must fix a time at its regular place of meeting for a public hearing upon the question of making the dedication of Easement to the City of Anaheim; and

WHEREAS, pursuant to Education Code Section 17558, the District is required to post copies of this Resolution, signed by the Board, in three (3) public places within the School District's boundaries not less than ten (10) days before the Public Hearing, and published notice once, not less than five days before the Public Hearing, in a local newspaper; and

NOW, THEREFORE, THE BOARD DOES HEREBY RESOLVE, DETERMINE AND ORDER AS FOLLOWS:

Section 1. That the above recitals are all true and correct.

Section 2. That the Board declares its intent to dedicate the Easement to the City of Anaheim upon the terms and conditions set forth in the Resolution.

Section 3. That the Board establishes August 24, 2010 for a public hearing on the question of the District's intent to dedicate the Easement to the City of Anaheim.

Section 4. That District staff shall post Resolution No 7 in three (3) public places within the District's boundaries and publish notice of the adoption of this Resolution in compliance with Education Code Section 17558.

Passed and adopted by the Governing Board of Placentia-Yorba Linda Unified School District on August 24, 2010.

Carol Downey
President of the Board of Education
Placentia-Yorba Linda Unified School District

Eric Padget
Clerk of the Board of Education
Placentia-Yorba Linda Unified School District

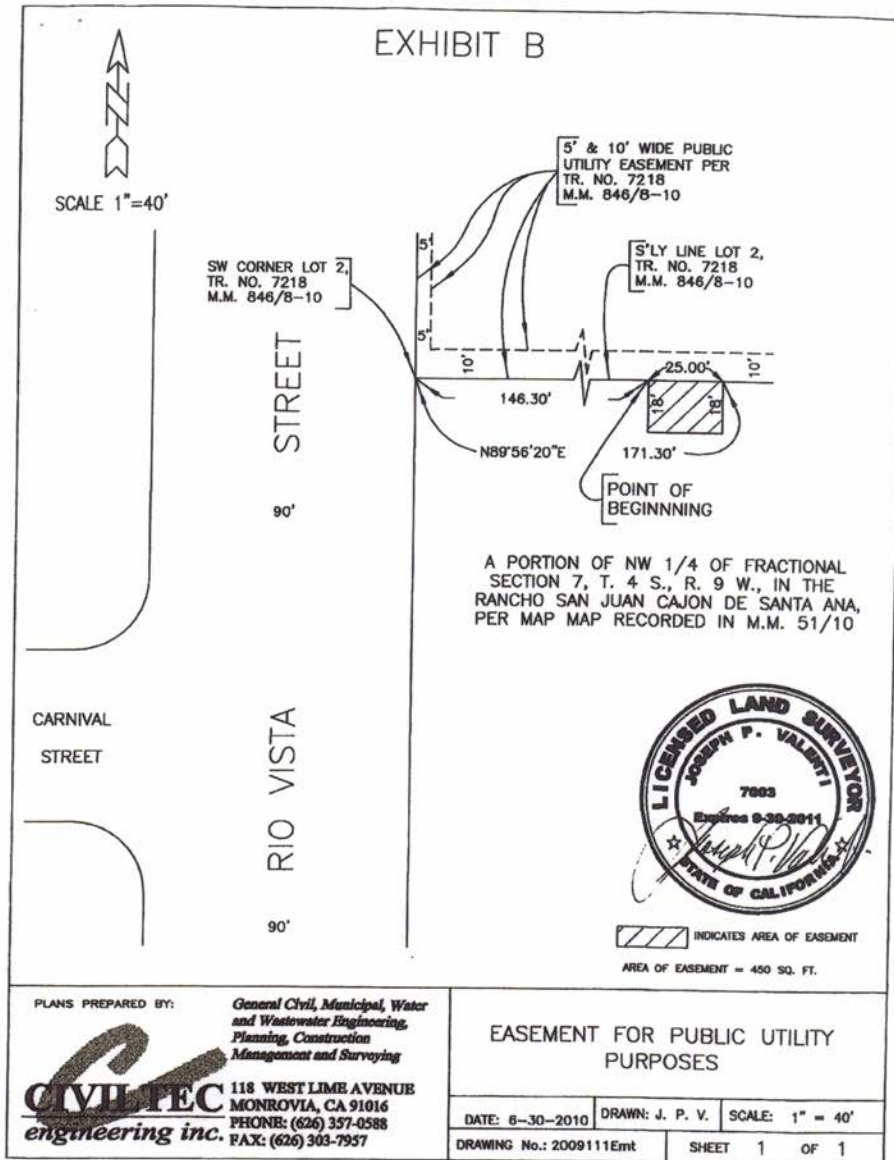
EXHIBIT A

THAT PORTION OF THE NORTHWEST QUARTER OF FRACTIONAL SECTION 7, TOWNSHIP 4 SOUTH, RANGE 9 WEST, IN THE RANCHO SAN JUAN CAJON DE SANTA ANA IN THE CITY OF ANAHEIM, COUNTY OF ORANGE, STATE OF CALIFORNIA, AS SAID SECTION IS SHOWN ON MAP RECORDED IN BOOK 51, PAGE 10, OF MISCELLANEOUS MAPS IN THE OFFICE OF THE RECORDER OF SAID COUNTY, WITHIN A STRIP OF LAND 18.00 FEET WIDE, THE NORTHERLY LINE OF WHICH IS DESCRIBED AS FOLLOWS:

BEGINNING A POINT ON SOUTHERLY LINE OF LOT 2 OF TRACT NO. 7218, SAID SOUTHERLY LINE ALSO BEING THE SOUTHERLY LINE OF A 10.00 FOOT WIDE PUBLIC UTILITY EASEMENT, ALL AS SHOWN ON MAP RECORDED IN BOOK 846, PAGES 8, 9, AND 10, OF MISCELLANEOUS MAPS IN THE OFFICE OF THE RECORDER OF SAID COUNTY, DISTANT THEREON NORTH 89° 56' 20" EAST 146.30 FEET FROM THE SOUTHWESTERLY CORNER OF SAID LOT 2; THENCE CONTINUING ALONG SAID SOUTHERLY LINE NORTH 89° 56' 20" EAST 25.00 FEET.

AREA: 450 SQUARE FEET





INDEPENDENT CONTRACTOR AGREEMENTS – EDUCATIONAL SERVICES

1. Meet the Masters, Inc. Presenter of art assemblies at Brookhaven Elementary School, September 7, 2010 to June 16, 2011; budgeted gift funds, NTE \$3,932.
2. Jannine Perkins, Educational Consultant, LLC Provider of revision of Houghton Mifflin Scope and Sequence guides, June 1-30, 2010; budgeted categorical funds, NTE \$750.
3. Cindy Cottier dba Augmentative Communication Therapies Provider of augmentative communication evaluation and consultation for special education students, July 1, 2010 to June 30, 2011; budgeted special education funds, NTE \$3,000.
4. Jannine Perkins, Educational Consultant, LLC Provider of CST data analysis and consultation for teachers, August 30, 2010 to January 30, 2011; budgeted categorical funds, NTE \$7,125.
5. Jannine Perkins, Educational Consultant, LLC Provider of CST data analysis for Wagner Elementary School, September 28, 2010; budgeted categorical funds, NTE \$775.
6. GOALS Provider of transportation for CASA students participating in the after-school recreation programs at Ruby Drive and Tynes elementary schools, September 7, 2010 to June 17, 2011; budgeted categorical funds, NTE \$6,000.
7. Boys and Girls Club of Brea/Placentia/Yorba Linda Provider of enrichment activities for CASA/ASES programs at Melrose, Rio Vista, Ruby Drive, Topaz and Tynes elementary schools, August 25, 2010 to June 17, 2011; budgeted categorical funds, NTE \$27,567.
8. GOALS Provider of transportation for CASA students participating in the after-school recreation programs at Melrose and Rio Vista elementary schools, September 7, 2010 to June 17, 2011; budgeted categorical funds, NTE \$14,000.
9. GOALS Provider of after-school services under the ASES program guidelines for Valadez Middle School Academy, August 25, 2010 to June 24, 2011; budgeted categorical funds, NTE \$114,535.
10. Total Education Systems Support (TESS) Presenter of Targeted Curriculum Alignment inservices for teachers, August 23, 2010 to March 1, 2011; budgeted categorical funds, NTE \$26,750.

11. Meet the Masters, Inc. Presenter of art assemblies at Sierra Vista Elementary School, November 8, 2010 to March 7, 2011; budgeted gift funds, NTE \$2,024.96.
12. Quintessential School Systems (QSS) Provider of training/consultation for new version of QSS business and human resources software, August 24, 2010 to June 30, 2011; budgeted general funds, NTE \$16,000.
13. LINKS Sign Language and Interpretive Services Provider of sign language interpretation, July 1, 2010 to June 30, 2011; budgeted special education funds, NTE \$5,000.
14. ATEC (Goodwill Industries of Orange County) Provider of screening and assessments for special education students as needed per IEP team decisions, July 1, 2010 to June 30, 2011; budgeted special education funds, NTE \$1,500.
15. Real Challenges Provider of vocational training consultation for special education students, July 1, 2010 to June 30, 2011; budgeted special education funds, NTE \$3,250.
16. Providence Speech and Hearing Center Provider of audiological evaluations and assessment for auditory processing disorders for special education students and IEP meeting attendance, July 1, 2010 to June 30, 2011; budgeted special education funds, NTE \$2,000.
17. GovPlace Provider of professional services for onsite deployment and installation of Landesk Power Management software for participation in the Southern California Edison Power Management incentive program, August 25, 2010 to June 30, 2011; budgeted categorical funds, NTE \$32,325.
18. City of Fullerton Provider of recreation services for the CASA/ASES program at Tynes Elementary School, August 30, 2010 to June 20, 2011; budgeted categorical funds, NTE \$22,080.
19. West Shield Adolescent Services Provider of transportation for special education student, July 9, 2010; budgeted special education funds, NTE \$3,801.72.
20. Image-X Provider of development of software for Data Utility Export, PDF and website changes and migration to the district server, August 25, 2010 to June 30, 2011; budgeted general funds, NTE \$10,975.

21. David Ghoogasian
Presenter of Translating Brain Research into Classroom Practice and Introduction to Differentiating Instruction inservices, October 26 to November 9, 2010; budgeted categorical funds, NTE \$4,200.
22. Lisa O'Connor, MA, CCC-SLP
Presenter of Impact of Communication on the Supervisory Process inservice for teachers, September 8, 2010; budgeted special education funds, NTE \$1,550.
23. Kyle Price
Provider of creation of GATE website and technology consultation, July 1, 2010 to June 30, 2011; budgeted categorical funds, NTE \$500.
24. YMCA of Orange County
Provider of recreation services for the CASA/ASES programs at Ruby Drive, Rio Vista, Tynes and Melrose elementary schools, August 25, 2010 to June 17, 2011; budgeted categorical funds, NTE \$79,080.
25. Gyssler Enterprises
Provider of maintenance of BTSA website, July 1, 2010 to June 30, 2011; budgeted categorical funds, NTE \$1,810.
26. Conscious Teaching, LLC
Presenter of classroom management training for teachers, September 30, 2010; budgeted categorical funds, NTE \$3,160.
27. Pete Snyder
Presenter of water safety training for certification of athletic coaches, September 2, 2010; budgeted categorical funds, NTE \$700.
28. John S. Douglas
Provider of administration of Teach American History grant as co-director, July 1, 2010 to June 30, 2011; budgeted categorical funds, NTE \$20,000.
29. David Ghoogasian – The Lyceum
Presenter of Brain Compatible and Differentiated Instruction inservices for teachers, October 14, 2010 to April 30, 2011; budgeted categorical funds, NTE \$8,400.
30. David St. Clair
Presenter of Formative Assessment for California Teachers (FACT) inservices for teachers, August 25, 2010 to June 17, 2011; budgeted categorical funds, NTE \$1,700.
31. Rich Liem
Presenter of Formative Assessment for California Teachers (FACT) inservices for teachers, August 25, 2010 to June 17, 2011; budgeted categorical funds, NTE \$1,700.

GIFTS

1. Checks totaling \$35,069 from Brookhaven PTA to be used for assemblies, enrichment summer school, reading intervention specialist, Outreach Concern, playground equipment and instructional supplies for Brookhaven Elementary School.
2. Checks totaling \$19,052.54 from Bryant Ranch PTA to be used for Online Accelerated Reader, field trip transportation and computer lab equipment for Bryant Ranch School.
3. Check in the amount of \$62 from Bryant Ranch 5th Grade Boosters to be used for field trip transportation for Bryant Ranch School.
4. Checks totaling \$1,069 from Dixie Shaw to be used for professional growth for teachers.
5. Canon 5800 printer from Gary P. Reynolds to be used for district office use.
6. Checks totaling \$2,470 from El Dorado PTSA to be used for instructional supplies at El Dorado High School.
7. Check in the amount of \$75 from Juilanna Reiter Suchard and Jeffrey R. Suchard to be used for classroom supplies for El Dorado High School.
8. Check in the amount of \$50 from Connie K. Schmidt and Louis J. Schmidt to be used for classroom supplies for El Dorado High School.
9. Refurbished desktop computer from Esperanza PTSA to be used for the library at Esperanza High School.
10. Check in the amount of \$408.04 from WaMoola Chase to be used for instructional supplies for Esperanza High School.
11. Checks totaling \$1,954.75 to be used for transportation for Fairmont Elementary School.
12. Check in the amount of \$76.94 from United Way, Inc. to be used for instructional supplies for Fairmont Elementary School.
13. Floor game rug and accessories from Pam Alexander to be used for child care activities at Fairmont Elementary School.
14. Check in the amount of \$6,180 from Glenknoll Booster Club to be used for technology and a promotion party for Glenknoll Elementary School.
15. Check in the amount of \$128.96 from Chase WaMoola to be used for instructional supplies for Glenview Elementary School.
16. Check in the amount of \$930.62 from Life Touch National School Studios to be used for instructional supplies for Glenview Elementary School.
17. Check in the amount of \$1,418.89 from Glenview PTA to be used for instructional supplies for Glenview Elementary School.
18. Checks totaling \$10,126.80 from Golden PTA to be used for computers and monitors, outdoor education and concrete installation for Golden Elementary School.
19. Check in the amount of \$1,195.35 from Lakeview PTA to be used for instructional supplies for Lakeview Elementary School.
20. Check in the amount of \$250 from Chubb and Son to be used for instructional supplies for Lakeview Elementary School.
21. Check in the amount of \$144.42 from WaMoola for Schools Program to be used for instructional materials for Linda Vista Elementary School.
22. Check in the amount of \$521.70 from Linda Vista PTA to be used for instructional materials for Linda Vista Elementary School.
23. Check in the amount of \$320 from Raytheon Matching Gifts for Education to be used to purchase a printer for Mabel Paine Elementary School.
24. Check in the amount of \$325.75 from Mabel Paine PTA to be used for field trip transportation for Mabel Paine Elementary School.
25. Check in the amount of \$150 from D. Kim to be used for instructional supplies for Parkview Home School.
26. Check in the amount of \$471 from Rio Vista PTA to be used for field trip transportation for Rio Vista Elementary School.
27. Check in the amount of \$167 from the Ocean Institute to be used for instructional purposes at Rose Drive Elementary School.

28. A check in the amount of \$22,389.39 from Sierra Vista PTA to be used computers and other instructional purposes at Sierra Vista Elementary School.
29. Checks totaling \$250 from Prudential California Realty and Cobalt Financial Corporation to be used for instructional materials at Travis Ranch School.
30. Check in the amount of \$137.14 from WaMoola for Schools Program to be used for instructional materials at Travis Ranch School.
31. Check in the amount of \$432.96 from WaMoola for Schools Program to be used for instructional materials at Tynes Elementary School.
32. Checks totaling \$472.24 from Edison International Employee Contribution Campaign to be used for instructional supplies at Tuffree Middle School.
33. Check in the amount of \$200 from Girl Scout Brownie Troop #1145 to be used for instructional supplies at Tynes Elementary School.
34. Check in the amount of \$500 from Capital Group Companies to be used for instructional materials at Yorba Linda High School.
35. Check in the amount of \$893.75 from Yorba Linda Middle School PTSA to be used for field trip transportation for Yorba Linda Middle School.

SPECIAL EDUCATION CONTRACTS

1. Red Rock Canyon School

Master Contract for Nonpublic, Nonsectarian School/Agency Services from July 1, 2010 to June 30, 2011; budgeted special education funds NTE \$33,000.

CLASSIFIED PERSONNEL REPORT

<u>Retirement</u>	<u>Position</u>	<u>Site</u>	<u>Effec. Date</u>
Martha Lace	Student Mother Prg. Aide	Esperanza	07/01/10
Carol Ramich	Food Svs. Wrk.	Valencia	08/31/10
Donald Pete Vaughn	HAVC Crew Chief	M & O	09/01/10

<u>Resignation</u>	<u>Position</u>	<u>Effec. Date</u>
Tammie Carle	Speech/Lang. Path. Asst.	08/02/10
Ashley Garlick	Child Care Tchr. I	07/01/10
Heather Hartman	Spec. Ed. Aide III	07/01/10
Joseph Hernandez	Groundskeeper I	07/19/10
Kory Kierulff	Campus Supv.	08/20/10
Nicole Lyons	Child Care Tchr. I	07/01/10

Employ, Classified Management

<u>Name</u>	<u>Position</u>	<u>Site</u>	<u>Effec. Date</u>
Meghan Bechtold	Occupational Therapist 80%	Spec. Ed.	08/23/10
Maurine Cole	Occupational Therapist 60%	Spec. Ed.	08/23/10
Dawn Emerson	Occupational Therapist 80%	Spec. Ed.	08/23/10
Shelley Fantino	Occupational Therapist 80%	Spec. Ed.	08/23/10
Jennifer Godown	Physical Therapist 80%	Spec. Ed.	08/23/10
Amy Greer	Physical Therapist 80%	Spec. Ed.	08/23/10
Jennifer Hansen	Occupational Therapist 80%	Spec. Ed.	08/23/10
Jiyyen Kim	Occupational Therapist 60%	Spec. Ed.	08/23/10

Employ

<u>Name</u>	<u>Position</u>	<u>Site</u>	<u>Effec. Date</u>
Ruben Ceballos	Groundskeeper I	M & O	07/20/10
Kira Schmitt	Food Svs. Worker	Food Service	09/07/10

Change of Status

<u>Employee</u>	<u>Previous Position</u>	<u>Change</u>	<u>Effective</u>
Heidi Capen	Clerk I, Rose Drive	Sch. Secty. I	07/13/10
Amy Rodelius	Occ. Therapist 60%	Increase to 80%	07/01/10
Noemi Ruedas	Dist. Receptionist	Secretary II	09/01/10
Terry Tolmasoff	Fac. Maint. Worker	HVAC Technician	07/01/10

Leave of Absence

<u>Position</u>	<u>Site</u>	<u>Reason</u>	<u>Effec. Dates</u>	
Susan Welch	Buyer/Proj. Spec.	Purchasing	FMLA	07/26/10-10/18/10

Rescind Lay-Off

<u>Employee</u>	<u>Position</u>	<u>Site</u>	<u>Effective</u>
Sorjuana Alonso	Bil. School Readiness Aide	Melrose	07/01/10
Charlotte Buss	Lead Academy Tutor	Melrose	07/01/10
Ana Lopez	Bil. School Readiness Aide	Melrose	07/01/10
Alma Morrison	Bil. Clerk I	Ed. Svs.	07/01/10
Sylvia Ramirez-Cuesta	Bil. Sch. Readiness Ld Tchr.	Rio Vista	07/01/10
Debra Reischman	Secretary II	Special Ed.	07/01/10
Rosalba Vitela	Bil. Sch. Readiness Ld Tchr.	Melrose	07/01/10

Short Term

<u>Position</u>	<u>NTE Hours</u>	<u>Site</u>	<u>Effec. Dates</u>	
Andrew Adamik	Fac. Maint. Wrkr.	240	Various	07/12/10-09/09/10
Allison Adams	Spec. Ed. Aide III	30	Tynes	08/09/10-08/26/10

<u>Short Term</u>	<u>Position</u>	<u>NTE Hours</u>	<u>Site</u>	<u>Effec. Dates (Cont'd)</u>
Jennifer Addison	Spec. Ed. Aide III	30	Tynes	08/09/10-08/26/10
Lindsey Aguilar	Sped. Ed. Aide II	42	Tynes	06/28/10-09/02/10
Elizabeth Albuja	Spec. Ed. Aide II	250	Spec. Ed.	07/01/10-06/30/11
Mary Allen	Clerk I	42	Melrose	08/23/10-09/30/10
Nicole Aranda	Spec. Ed. Aide III	30	Tynes	08/09/10-08/26/10
Margarita Arroyo	Bil. Inst. Aide	10	Melrose	09/08/10-06/16/11
Phillip Arroyo (2)	Spec. Ed. Aide II	150	George Key	06/22/10-07/29/10
Mariah Asam (2)	Noon Supv.		Bryant Ranch	08/30/10-06/16/11
Marcella Avalos	Noon Supv.		Glenknoll	09/07/10-06/30/11
Mariella Ayllon	Spec. Ed. Aide II	250	Spec. Ed.	07/01/10-06/30/11
Deby Becker	Spec. Ed. Aide III	30	Tynes	08/09/10-08/26/10
Linda Bendt	Spec. Ed. Aide I/II	150	Various	06/22/10-07/29/10
Joan Bennett	Consultant	100	Admin. Svs.	07/01/10-06/30/11
Shilpa Bhayya (2)	Spec. Ed. Aide II	115	George Key	06/28/10-07/29/10
Beverly Blossom	Spec. Ed. Aide I	35	Brookhaven	09/07/10-06/30/11
Sara Bissell	Noon Supv.		Lakeview	09/07/10-06/16/11
Janina Bond	Spec. Ed. Aide III	30	Tynes	08/09/10-08/26/10
Jillian Book	Spec. Ed. Aide II	35	George Key	06/28/10-07/29/10
Kathy Breaux	Noon Supv.		Brookhaven	09/07/10-06/30/11
Shirley Bridwell	Spec. Ed. Aide II	15	Esperanza	07/06/10-07/29/10
Carrie Buck	Spec. Ed. Aide I/II	150	Various	06/22/10-07/29/10
Carol Bueno (2)	Noon Supv.		Bryant Ranch	08/30/10-06/16/11
Karyn Butler	Bil. Sch. Secretary I	20	Ruby Drive	07/01/10-06/30/11
Jesus Camarena	Groundskeeper I	240	Various	07/12/10-09/09/10
Jeanette Campos	Spec. Ed. Aide I	5	Rio Vista	06/01/10-07/30/10
Jorge Castillo	Custodian	50	M & O	07/09/10-06/30/11
Lorraine Castro	Noon Supv.		Melrose	09/07/10-06/16/11
Renee Castro	Noon Supv.		Glenknoll	09/07/10-06/30/11
Norma Ceballos	Noon Supv.		Morse	08/16/10-06/16/11
Ruben Ceballos	Groundskeeper I	240	Various	07/01/10-06/30/11
Maria Cervantes	Spec. Ed. Aide II	250	Spec. Ed.	07/01/10-06/30/11
Adriana Chamberlin	Spec. Ed. Aide I/II		Various	06/22/10-07/29/10
Jessica Chan	AVID Tutor	20	Valadez	08/02/10-08/27/10
Anabella Chang	Bil. Inst. Aide	20	Topaz	09/07/10-06/16/11
Arlene Chapin-Turnham	Spec. Ed. Aide II	35	George Key	06/28/10-07/29/10
Christina Chavez	Spec. Ed. Aide I	20	Valadez	08/02/10-08/27/10
Pamela Chiang	Noon Supv.		Lakeview	09/07/10-06/16/11
Deborah Clarke	Noon Supv.		Lakeview	09/07/10-06/16/11
Elizabeth Clasen	Spec. Ed. Aide III	30	Tynes	08/09/10-08/26/10
Bridgette Cloutier	Spec. Ed. Aide I	5	Rio Vista	06/01/10-07/30/10
Maricela Contreras	Noon Supv.		Topaz	09/07/10-06/16/11
Gabrielle Coughran	Noon Supv.		Brookhaven	09/07/10-06/30/11
Priscilla Cruz	Spec. Ed. Aide III	30	Tynes	08/09/10-08/26/10
Lynette Currier	Noon Supv.		Glenknoll	09/07/10-06/30/11
Pamela Daily	Noon Supv.		Golden	09/07/10-06/30/11
Laura Dame	Noon Supv.		Lakeview	09/07/10-06/16/11
Tina De Board	Noon Supv.		Lakeview	09/07/10-06/16/11
Teresa De La Torre	Health Clerk	100	Topaz	08/28/10-06/16/11
Maria De Prevoisin	Noon Supv.		Fairmont	09/07/10-06/16/11
Martha Delgadillo	Clerk	20	Topaz	09/07/10-06/16/11
Jane DeRose	Clerk I	20	Fairmont	08/16/10-06/16/11
Susan DeSmith	Noon Supv.		Morse	08/16/10-06/16/11
Dillon Dickson	Facilities Maint. Wrk.	200	M & O	07/01/10-09/10/10

<u>Short Term</u>	<u>Position</u>	<u>NTE Hours</u>	<u>Site</u>	<u>Effec. Dates (Cont'd)</u>
Patti Donovan (2)	Noon Supv.		Fairmont	09/07/10-06/16/11
Susan Downey	Noon Supv.		Brookhaven	09/07/10-06/16/11
Anna Egizzi	Spec. Ed. Aide II	250	Spec. Ed.	07/01/10-06/30/11
Estela Espinoza	Bil. Inst. Aide	20	Topaz	09/07/10-06/16/11
Pat Espinoza	Spec. Ed. Aide II	250	Spec. Ed.	07/01/10-06/30/11
Elena Espinoza de Esquivel	Noon Supv.		Melrose	09/07/10-06/16/11
Karen Estabrook	Noon Supv.		Brookhaven	09/07/10-06/30/11
Jose B. Estrada	Warehouse Supv.	40	Warehouse	08/16/10-06/30/11
Janet Fears (2)	Spec. Ed. Aide II	140	George Key	06/22/10-07/29/10
Gabriela Fernandez	Spec. Ed. Aide II	250	Spec. Ed.	07/01/10-06/30/11
Gabriela Fernandez	Secretary	60	Melrose	08/09/10-08/26/10
Gabriela Fernandez	Bil. Comm. Stud. Adv.	42	Melrose	08/16/10-09/30/10
Garbiela Fernandez	Bil. Comm. Stud. Adv.	40	Morse	07/01/10-06/30/11
Gabriela Fernandez	Bil. Comm. Liaison	20	Melrose	09/08/10-06/30/11
April Flores	Noon Supv.		Morse	08/16/10-06/16/11
Ayerim Flores (2)	Bil. Clerk I	400	Topaz	08/13/10-06/30/11
Jane Fujimoto	Sr. Prog. Analyst/Op. Supv.		Technology	07/01/10-06/30/11
Yessica Gamboa	Spec. Ed. Aide III	30	Tynes	08/09/10-08/26/10
Johanna Garcia	Spec. Ed. Aide II	250	Spec. Ed.	07/01/10-06/30/11
Rafael Garcia	Groundskeeper I	240	Various	07/01/10-06/30/11
Tanya Garcia-Mancia	Spec. Ed. Aide II	250	Spec. Ed.	07/01/10-06/30/11
Monica Garcia-Sandoval	School Secretary	20	Morse	08/16/10-06/30/11
Rosaria Gerace	Noon Supv.		Lakeview	09/07/10-06/16/11
Jason Gerry (2)	Spec. Ed. Aide II	30	George Key	06/21/10-09/03/10
Jason Gerry	Spec. Ed. Aide II		Various	07/12/10-07/29/10
Melinda Giamo	Spec. Ed. Aide II	250	Spec. Ed.	07/01/10-06/30/11
Kim Gill	Spec. Ed. Aide I/II		Various	06/22/10-07/29/10
Lisa Gilles	Spec. Ed. Aide II	15	George Key	07/06/10-07/29/10
German Gonzales	Equipment Operator		M & O	07/01/10-09/07/10
Luis Gonzales	Groundskeeper I	240	Various	07/01/10-06/30/11
Alicia Gonzalez (2)	Noon Supv.		Topaz	09/07/10-06/16/11
Maria Gonzalez (2)	Noon Supv.		Melrose	09/07/10-06/16/11
Sara Grandbouche	Spec. Ed. Aide III	30	Tynes	08/09/10-08/26/10
Debi Grant	Noon Supv.		Brookhaven	09/07/10-06/30/11
Carol Gray	Pers. Secty. Conf.	100	Personnel	08/04/10-06/30/11
Cynthia Green	School Secretary I	20	Fairmont	08/13/10-06/16/11
Virginia Gregory	Noon Supv.		Brookhaven	09/07/10-06/30/11
Sandra Gutierrez	Spec. Ed. Aide I	60	Topaz	07/01/10-08/21/10
Amy Gwatney	Spec. Ed. Aide III	30	Tynes	08/09/10-08/26/10
Karen Haines (2)	Noon Supv.	6	Bryant Ranch	08/30/11-06/16/11
Daniel Hanaumi	Spec. Ed. Aide I/II/III		Various	06/22/10-07/29/10
Clinton Hansen	Facilities Maint. Wkr.	240	M & O	07/14/10-09/09/10
Heather Hartman	Spec. Ed. Aide III	40	Linda Vista	06/28/10-09/02/10
Sabra Hayden	Custodian	240	Various	08/02/10-06/30/11
Tyler Heckerman	Spec. Ed. Aide III	30	Tynes	08/09/10-08/26/10
Christina Hernandez	Spec. Ed. Aide II	250	Spec. Ed.	07/01/10-06/30/11
Joseph Hernandez	Groundskeeper	240	Various	07/01/10-06/30/11
Sandra Hernandez	Bil. Inst. Aide	10	Rio Vista	09/01/09-10/01/10
Sonia Herrington (2)	Spec. Ed. Aide II	23	George Key	06/28/10-07/29/10
Alice Hetland (2)	Clerk II	80	Parkview	07/07/10-08/12/10
Sharon Hochgesang	Custodian	240	Various	08/02/10-06/30/11
Michelle Holdeman	Noon Supv.		Fairmont	09/07/10-06/16/11
Tristan Holt	Groundskeeper I	240	Various	07/12/10-09/09/10

<u>Short Term</u>	<u>Position</u>	<u>NTE Hours</u>	<u>Site</u>	<u>Effec. Dates (Cont'd)</u>
Linda Hoo	Clerk I/Noon Supv.		Lakeview	09/07/10-06/16/11
Guadalupe Hurtado (3)	Noon Supv.		Melrose	09/07/10-06/16/11
Gloria Irwin (2)	Noon Supv.		Bryant Ranch	08/30/10-06/16/11
Mina Johnson	Noon Supv.		Golden	09/07/10-06/30/11
Megan Jones	Spec. Ed. Aide II	60	Tynes	06/28/10-07/29/10
Barbara Lang-Finnegan	Spec. Ed. Aide I	5	Rio Vista	06/01/10-07/30/10
Fei Kanoholani	Spec. Ed. Aide II	20	Spec. Ed.	07/01/10-06/30/11
Joanna Keating-Velasco (2)	Spec. Ed. Aide II	50	George Key	06/22/10-07/29/10
Ann Kelly	Noon Supv.		Glenknoll	09/07/10-06/30/11
Terry Kennedy	Clerk I/School Secty.		Lakeview	09/07/10-06/16/11
Terry Kennedy	Noon Supv.		Lakeview	09/07/10-06/16/11
Pamela Kibby	Spec. Ed. Aide I/II/III		Various	06/22/10-07/29/10
Mary Kim	Spec. Ed. Aide II	30	George Key	06/28/10-07/29/10
Marilyn Kirk	Noon Supv.		Fairmont	09/07/10-06/16/11
Sarah Knight	Spec. Ed. Aide III	30	Tynes	08/09/10-08/26/10
Adrienne Kresge (2)	Spec. Ed. Aide III	45	Tynes	06/28/10-09/02/10
Anchao Lai	Spec. Ed. Aide II	20	Spec. Ed.	07/01/10-06/30/11
Christine Lara	Spec. Ed. Aide II	250	Spec. Ed.	07/01/10-06/30/11
Margarita Larios	Bil. Inst. Aide	20	Topaz	09/07/10-06/16/11
Kathy Levay (2)	Noon Supv.		Golden	09/07/10-06/30/11
Cher Lindley	Spec. Ed. Aide I/II		Various	06/22/10-07/29/10
Alfonso Lopez	Instructional Aide	10	Rio Vista	09/01/09-10/01/10
Magaly Lopez-Gallegos	Spec. Ed. Aide II	35	George Key	06/28/10-07/29/10
Evangelina Lozoya	Noon Supv.		Melrose	06/07/10-06/26/11
Madelaluz Lopez	Noon Supv.		Melrose	09/07/10-06/16/11
Maria Lumby (2)	Bil. Library Tech.	120	Topaz	09/07/10-06/16/11
Jessica Maas	Spec. Ed. Aide III	30	Tynes	08/09/10-08/26/10
Cynthia Maes	Comp. Inst. Spec.	100	Topaz	09/07/10-06/16/11
Garrett Magdaleno	Spec. Ed. Aide III		El Dorado	06/22/10-07/29/10
Blanca Maldonado	Bil. Sr. Clerk	160	Transp.	07/01/10-08/01/10
Catherine Martinez	Clerk I	40	Lakeview	08/15/10-06/30/11
Silvia Mac Benttez	Bil. Inst. Aide	8	Melrose	09/07/10-06/16/11
Mercedes Martinez	Noon Supv.		Glenknoll	09/07/10-06/30/11
Nidia Martinez	Noon Supv.		Melrose	09/07/10-06/30/11
Sue McAdam (2)	Clerk II	60	Bryant Ranch	09/07/10-06/23/11
Kathy McKelvey (2)	Clerk I	80	Lakeview	08/23/10-06/30/11
Bhavna Mehta	Noon Supv.		Fairmont	09/07/10-06/16/11
Maria Meza	Noon Supv.		Melrose	09/07/10-06/16/11
Lisa Mitchell	Clerk II	20	Fairmont	08/13/10-06/16/11
Lizethe Molina	Spec. Ed. Aide II	250	Spec. Ed.	07/01/10-06/30/11
Estela Monroy	Bil. Inst. Aide	40	Topaz	09/07/10-06/16/11
Ashley Montgomery	Spec. Ed. Aide III	30	Tynes	08/09/10-08/26/10
Lisa Montoya	Noon Supv.		Fairmont	09/07/10-06/16/11
Gustiana Mudarsih	Noon Supv.		Lakeview	09/07/10-06/16/11
Emily Murphy	Spec. Ed. Aide II	35	George Key	06/28/10-07/29/10
Eren Musterman	Spec. Ed. Aide II	250	Spec. Ed.	07/01/10-06/30/11
Joe Olea	Fac. Maint. Wrk.	200	Various	07/01/10-06/30/11
Heather Olson	Spec. Ed. Aide III	50	Tynes	05/17/10-06/17/10
Blake Onishi	Spec. Ed. Aide II	60	George Key	06/22/10-07/26/10
Anthony Ortega	Groundskeeper I	240	Various	07/01/10-06/30/11
Edwina Ortega	Noon Supv.		Brookhaven	09/07/10-06/30/11
Graciela Padilla	Noon Supv.		Fairmont	09/07/10-06/16/11
Graciela Padilla	Spec. Ed. Aide II	75	Tynes	06/24/10-07/29/10

<u>Short Term</u>	<u>Position</u>	<u>NTE Hours</u>	<u>Site</u>	<u>Effec. Dates (Cont'd)</u>
Usha Parikh	Noon Supv.		Fairmont	09/07/10-06/16/11
Ronnette Parker (3)	Spec. Ed. Aide III	80	Brookhaven	06/22/10-08/26/10
Carlos Pasillas	Spec. Ed. Aide II	30	George Key	06/28/10-07/29/10
Dipti Patel	Noon Supv.		Glenknoll	09/07/10-06/30/11
Erin Paunovich	Secretary	20	Topaz	08/13/10-06/30/11
Hermina Perry	Bil. Inst. Aide	20	Ruby Drive	07/01/10-06/30/11
Hermina Perry	Spec. Ed. Aide II	250	Spec. Ed.	07/01/10-06/30/11
Brittany Pham	Spec. Ed. Aide III	30	Tynes	08/09/10-08/26/10
Richard Philipp	Dir. Maint. & Oper.	44/Days	M & O	07/01/10-06/30/11
Stacy Pinegar	Clerk I	20	Brookhaven	08/30/10-12/31/10
Devon Pippin	Noon Supv.		Brookhaven	09/07/10-06/16/11
Joann Pitochelli	Noon Supv.		Glenknoll	09/07/10-06/16/11
Susan Puch	Noon Supv.		Golden	09/07/10-06/30/11
Keith Pugh	Facilities Maint. Wrk.	240	M & O	07/15/10-09/09/10
Martha Rangel	Spec. Ed. Aide II	30	George Key	06/28/10-07/29/10
Yvonne Rangel	Spec. Ed. Aide II	250	Spec. Ed.	07/01/10-06/30/11
William Ray	Campus Supv.	64	El Dorado	06/21/10-09/07/11
Soleded Resendiz	Spec. Ed. Aide II	250	Spec. Ed.	07/01/10-06/30/11
Soledad Resendiz (2)	Spec. Ed. Aide III	54	Tynes	08/09/10-08/26/10
Trina Reta	Noon Supv.		Glenknoll	09/07/10-06/16/11
Yvette Reta	Spec. Ed. Aide II	40	George Key	06/22/10-07/29/10
Yvette Reta	Spec. Ed. Aide II	75	Various	06/22/10-07/29/10
Erlinda Reyes	Secretary I	10	Golden	08/01/10-06/16/11
Lisa Rickerd-Gorny	Noon Supv.		Fairmont	09/07/10-06/16/11
Janey Riech	Spec. Ed. Aide III	30	Tynes	08/09/10-08/26/10
Mitzi Riggs	Spec. Ed. Aide I	8	Glenknoll	06/07/10-06/17/10
Arliett Rishmawy	Spec. Ed. Aide II	250	Spec. Ed.	07/01/10-06/30/11
Arliett Rishmawy	Spec. Ed. Aide I	20	Topaz	09/07/10-06/16/11
Elizabeth Rivera	Custodian	240	Various	08/02/10-06/30/11
Trini Robles	Custodian	240	Various	08/02/10-06/30/11
Phylo Robold	Spec. Ed. Aide II	65	Esperanza	06/22/10-07/29/10
Eva Rodriguez	Spec. Ed. Aide II	250	Spec. Ed.	07/01/10-06/30/11
Lena Rodriguez	Spec. Ed. Aide III	30	Tynes	08/09/10-08/26/10
Steven Rodriguez (2)	Custodian/Grounds	330	Various	06/01/10-06/30/11
Leonor Rollins (2)	Noon Supv.		Fairmont	09/07/10-06/16/11
Estrella Romero	Bil. Clerk II	10	Tynes	07/01/10-08/12/10
Debbie Rosenbaum (2)	Noon Supv.		Bryant Ranch	08/30/10-06/16/11
Deborah Rosenkranz	Noon Supv.		Lakeview	09/07/10-06/16/11
Michael Rosenbaum	Noon Supv.	6	Bryant Ranch	08/30/11-06/16/11
Filemon Rubalcava	Custodian	70	Various	06/01/10-06/30/11
Mario Rubio	Spec. Ed. Aide II	7	Esperanza	06/22/10-07/29/10
Mario Rubio	Spec. Ed. Aide II	35	Various	06/22/10-07/29/10
Kelly Rucker	Spec. Ed. Aide III	30	Tynes	08/09/10-08/26/10
Raemund Ruiz	Spec. Ed. Aide II	30	Tynes	08/09/10-08/26/10
Bradd Runge	Sprinkler Repair Wkr.		M & O	07/01/10-09/07/10
Melissa Sams	Noon Supv.		Brookhaven	09/07/10-06/16/11
Irma Sanchez	Bil. Inst. Aide	20	Ruby Drive	07/01/10-06/16/11
Martina Sandoval	Clerk I	20	Ed. Svs.	07/16/10-12/31/10
Prudence Sanguedolce (2)	Noon Supv.		Golden	09/07/10-06/30/11
Martina Sandoval	Spec. Ed. Aide II	250	Spec. Ed.	07/01/10-06/30/11
Irma Sanchez	Spec. Ed. Aide II	250	Spec. Ed.	07/01/10-06/30/11
Cali Santamaria (2)	Noon Supv.		Bryant Ranch	08/30/10-06/16/11
Shilpa Sawant	Noon Supv.		Glenknoll	09/07/10-06/16/11

<u>Short Term</u>	<u>Position</u>	<u>NTE Hours</u>	<u>Site</u>	<u>Effec. Dates (Cont'd)</u>
Sue Schiebeck	Clerk I	10	Golden	08/01/10-06/16/11
Maria Scribner	Sch. Secty. I	10	Tynes	07/01/10-08/12/10
Caroline Sewell	Noon Supv.		Lakeview	09/07/10-06/16/11
Melinda Shank	Noon Supv.		Fairmont	09/07/10-06/16/11
Noemi Shaw	Spec. Ed. Aide II	25	George Key	06/28/10-07/29/10
Ruth Sheffield	Lib/Media Tech.	50	Valadez	07/01/10-08/12/10
Shu Lin Shen	Noon Supv.		Brookhaven	09/07/10-06/16/11
Eva Sierra	Spec. Ed. Aide II	250	Kraemer	07/01/10-06/30/11
Leimomi Simpson (3)	Spec. Ed. Aide II	85	George Key	04/16/10-06/17/10
Joan Sircable	Noon Supv.		Fairmont	09/07/10-06/16/11
Ron Smiley	Consultant	100	Admin. Svs.	07/01/10-06/30/11
Ezra Snider	Spec. Ed. Aide II	35	Golden	06/28/10-07/29/10
Patricia Solorio-Cisneros	Spec. Ed. Aide II	250	Spec. Ed.	07/01/10-06/30/11
Karrita Speed	Custodian	240	Various	08/02/10-06/30/11
Amber Spielman	Noon Supv.		Lakeview	09/07/10-06/16/11
Michelle Stack	Custodian	240	Various	08/02/10-06/30/11
Linda Struiksma	Spec. Ed. Aide II	36	Golden	07/06/10-07/29/10
Elisabeth Suchy	Noon Supv.		Golden	09/07/10-06/30/11
Youngkyung Suh	Spec. Ed. Aide II	40	Spec. Ed.	07/01/10-06/30/11
Susan Swinfard (2)	Bil. Inst. Aide/Clerk I	57	Melrose	08/16/10-09/30/11
Susan Swinfard	Bil. Inst. Aide	20	Ed. Svs.	07/19/10-12/31/10
Aylsa Tanco	Spec. Ed. Aide II	250	Spec. Ed.	07/01/10-06/30/11
Maria Tanco	Spec. Ed. Aide III	30	Tynes	08/09/10-08/26/10
Karen Tapia	Spec. Ed. Aide II	55	Esperanza	06/22/10-07/29/10
Eloisa Tarin	Inst. Aide	10	Rio Vista	09/01/09-10/01/10
Gregory Thomson	Sr. Prog. Analyst		Technology	07/01/10-06/30/11
Shuk To	Noon Supv.		Lakeview	09/07/10-06/16/11
Rosauro Toledo (2)	Noon Supv.	6	Bryant Ranch	08/30/10-06/16/11
Penny Tomsons	Spec. Ed. Aide II	25	George Key	06/22/10-07/29/10
Ana Torres de Vela	Noon Supv.		Topaz	09/07/10-06/16/11
Patricia Trejo	Spec. Ed. Aide II	250	Spec. Ed.	07/01/10-06/30/11
Patricia Trejo	Spec. Ed. Aide II	20	Topaz	09/07/10-06/16/11
An Trieu	Spec. Ed. Aide II	20	Spec. Ed.	07/01/10-06/30/11
Ray Tschudy (2)	Facilities Maint. Wrk		Various	06/23/10-07/03/10
Shirley Turner	Noon Supv.		Brookhaven	09/07/10-06/30/11
Yajaira Uribe	Spec. Ed. Aide II	20	Topaz	09/07/10-06/16/11
Casey Valdez	Spec. Ed. Aide II	45	Esperanza	06/22/10-07/29/10
Frank Valenzuela	Groundskeeper	240	Various	07/19/10-06/30/11
Ian Volker	Spec. Ed. Aide II	35	George Key	06/28/10-07/29/10
Nancy Watson	Spec. Ed. Aide II	20	Spec. Ed.	07/01/10-06/30/11
Lilly Weissenback	Spec. Ed. Aide II	250	Spec. Ed.	07/01/10-06/30/11
Alma Wheat	Bil. Clerk I	100	Ruby Drive	07/01/10-06/30/11
Alma Wheat	Spec. Ed. Aide II	250	Spec. Ed.	07/01/10-06/30/11
Jacquelyn Wissman	Spec. Ed. Aide III	30	Tynes	08/09/10-08/26/10
Karen Wolcott	Spec. Ed. Aide III	30	Tynes	08/09/10-08/26/10
Beverly Womack	Inst. Aide	100	Topaz	09/06/10-06/16/11
Laura Woolard	Spec. Ed. Aide II	60	George Key	06/28/10-07/29/10
Laura Woolard	Custodian	240	Various	08/02/10-06/30/11
Venita Wright	Spec. Ed. Aide I/II		Various	06/22/10-07/29/10
Amy Yalda	Noon Supv.		Lakeview	09/07/10-06/16/11
Corrine Young	Comp. Operator	104	Technology	07/01/10-10/31/10
Earl Zahn	Noon Supv.		Fairmont	09/07/10-06/16/11
Erica Zapien	Lib/Media Tech.	10	Melrose	09/07/10-06/16/11

<u>Short Term</u>	<u>Position</u>	<u>NTE Hours</u>	<u>Site</u>	<u>Effec. Dates (Cont'd)</u>
Sharon Zechiel (2)	Noon Supv.	6	Bryant Ranch	08/30/10-06/16/11
Jessica Zepeda	Spec. Ed. Aide III	40	Tynes	08/09/10-08/26/10
Sandra Zepeda	Custodian	240	Various	08/02/10-06/30/11
Vanessa Zepeda (2)	Spec. Ed. Aide III	55	Tynes	06/28/10-09/03/10

<u>Substitutes</u>	<u>Position</u>	<u>Site</u>	<u>Effec. Date</u>
Andrew Adamik	Fac. Maint. Worker	M & O	07/12/10
Lindsey Aguilar	Spec. Ed. Aide III	Tynes	06/22/10
Mary Allen (2)	Clerk I	Melrose	09/08/10
Michelle Almanzar	Noon Supv.	Golden	09/07/10
Margarita Arriola	Lib/Media Tech.	Melrose	09/08/10
Philip Arroyo	Spec. Ed. Aide I/II	Various	06/22/10
Marcella Avalos	Noon Supv.	Glenknoll	09/07/10
Belinda Avila	Spec. Ed. Aide I/II	Various	06/22/10
Diane Barron	Spec. Ed. Aide I/II	Various	06/22/10
Charity Biddix	Noon Supv.	Melrose	09/07/10
Julie Beith	Lib/Media Tech.	Bryant Ranch	09/07/10
Sara Bissell	Noon Supv.	Lakeview	09/07/10
Beverly Blossom	School Secty. I	Brookhaven	09/07/10
Ellen Bonkoski	Spec. Ed. Aide I/II	Various	06/22/10
June Bosley	Spec. Ed. Aide I/II	Various	06/22/10
Kathy Bouissiere	Spec. Ed. Aide I/II	Various	06/22/10
Kathy Breaux	Noon Supv.	Brookhaven	09/07/10
Shirley Bridwell	Spec. Ed. Aide I/II	Various	06/22/10
Selina Brittain	Secty I/Clerk	Morse	08/16/10
Denise Broadwater	Lib/Med. Tech, Clerk I	Brookhaven	09/07/10
Carrie Buck	Spec. Ed. Aide I/II	Various	06/22/10
Andrea Burns	Noon Supv.	Morse	09/07/10
Charlotte Buss	Lib/Media Tech.	Melrose	09/08/10
Kristin Camacho	Spec. Ed. Aide I/II	Various	06/22/10
Jesus Camarena	Groundskeeper I	Various	07/12/10
Maggie Carrigan	Spec. Ed. Aide I/II/III	Various	06/22/10
Norma Ceballos (2)	Noon Supv.	Morse/Melrose	08/16/10
Ruben Ceballos	Groundskeeper	Various	07/01/10
Christina Chavez	Spec. Ed. Aide I/II	Various	06/22/10
Pamela Chiang	Noon Supv.	Lakeview	09/07/10
Bridgett Cloutier	Spec. Ed. Aide I/II	Various	06/22/10
Carmen Cobian	Spec. Ed. Aide I/II	Various	06/22/10
Terry Colelli	Secretary	Glenknoll	08/13/10
Mauricio Corona	Spec. Ed. Aide I/II	Various	06/22/10
Gabriele Coughran	Noon Supv.	Brookhaven	09/07/10
Charlene Dagampat	Spec. Ed. Aide I/II	Various	06/22/10
Pam Daily	Spec. Ed. Aide I/II	Various	06/22/10
Laura Dame	Noon Supv.	Lakeview	09/07/10
Felicitas De Anda	Noon Supv.	Melrose	09/07/10
Jane De Rose	School Secty. I/Clerk II	Fairmont	08/16/10
Susan DeSmith	Noon Supv.	Morse	08/16/10
Elizabeth Diaz	Noon Supv.	Fairmont	09/07/10
Elizabeth Diaz	Comp. Lab Aide	Fairmont	09/07/10
Elizabeth Diaz	Library/Media Clerk	Fairmont	09/07/10
Dillon Dickson	Facilities Maint. Wrk.	M & O	07/01/10
Susan Downey	Noon Supv.	Brookhaven	09/07/10
Aida Duran	Noon Supv.	Melrose	09/07/10

<u>Substitutes</u>	<u>Position</u>	<u>Site</u>	<u>Effec. Date</u> (Cont'd)
Catrina Eazell	Spec. Ed. Aide I/II	Various	06/22/10
Karen Eder	Spec. Ed. Aide I/II	Various	06/22/10
Karen Estabrook	Noon Supv.	Brookhaven	09/07/10
Ollie Farmer	Comp. Inst. Spec.	Melrose	09/08/10
Jamie Fatigati	Spec. Ed. Aide I/II	Various	06/22/10
Gabriela Fernandez	Clerk I/Secretary	Melrose	09/08/10
April Flores	Noon Supv.	Morse	08/16/10
Ayerim Flores	Secretary I	Topaz	09/07/10
Jan French	Spec. Ed. Aide I/II	Various	06/22/10
Karen Fuentes	Noon Supv.	Morse	09/07/10
Julie Garcia (2)	Spec. Ed. Aide I/II/III	Various	06/22/10
Rafael Garcia	Groundskeeper I	Various	07/01/10
Monica Garcia-Sandoval	School Secretary	Morse	08/16/10
Jennifer Gathright	Noon Supv.	Fairmont	09/07/10
Jennifer Gathright	Library/Media Clerk	Fairmont	09/07/10
Rosaria Gerace	Noon Supv.	Lakeview	09/07/10
Patricia Gibbs	Spec. Ed. Aide I/II	Various	06/22/10
Cindy Gilles	Spec. Ed. Aide I/II	Various	06/22/10
Ashley Gillette	Spec. Ed. Aide I/II	Various	06/22/10
Robin Glenn	Noon Supv.	Brookhaven	09/07/10
Luis Gonzales	Groundskeeper I	Various	07/01/10
Debi Grant	Noon Supv.	Brookhaven	09/07/10
Virginia Gregory	Noon Supv.	Brookhaven	09/07/10
Judy Gutierrez	Spec. Ed. Aide I/II/II	Various	06/22/10
Clinton Hansen	Facilities Maint. Wrk.	M & O	07/14/10
Heather Hartman	Spec. Ed. Aide III	Linda Vista	06/22/10
Joseph Hernandez	Groundskeeper	Various	07/01/10
Lucia Hernandez	Noon Supv.	Melrose	09/07/10
Linda Hill (2)	Noon Supv.	Golden	09/07/10
Tristan Holt	Groundskeeper I	Various	07/12/10
Linda Hoo	Clerk I/Noon Supv.	Lakeview	09/07/10
Zan Hrubeniuk	Secretary I/Clerk	Morse	08/16/10
Zhihong Huang	Noon Supv.	Morse	09/07/10
Gloria Irwin	Noon Supv.	Bryant Ranch	08/30/10
Lorie Johns	Spec. Ed. Aide I/II	Various	06/22/10
Terry Kennedy	Clerk I/School Secty.	Lakeview	09/07/10
Pam Kibby	Spec. Ed. Aide I/II/III	Various	07/08/10
Carolyn Kim	Lib/Media Tech.	Brookhaven	09/07/10
Ryan Kim	Spec. Ed. Aide I/II	Various	06/22/10
Marilyn Kirk	Noon Supv.	Fairmont	09/07/10
Suhair Kiryakos	Noon Supv.	Golden	09/07/10
Janice Klewer	Secretary	Golden	07/01/10
Shannon Little-Berzins	Noon Supv.	Morse	08/16/10
Gail Lofdahl	Comp. Aide	Lakeview	09/01/10
Ana Lopez	Noon Supv.	Melrose	09/07/10
Taylor Love	Spec. Ed. Aide I/II	Various	06/22/10
Estelle Lubinski	Spec. Ed. Aide I/II/III	Various	06/22/10
Carol Lyskoski	Noon Supv.	Morse	08/16/10
Laberta Malone	Noon Supv.	Brookhaven	09/07/10
Catherine Martinez (2)	Sch. Secretary I/Clerk I	Lakeview	09/01/10
Catherine Martinez	Secretary I/Clerk	Morse	08/16/10
Mercedes Martinez	Noon Supv.	Glenknoll	09/07/10
Sue McAdam	Clerk II	Bryant Ranch	08/16/10

<u>Substitutes</u>	<u>Position</u>	<u>Site</u>	<u>Effec. Date</u> (Cont'd)
Gloria McDonnell	Spec. Ed. Aide I/II	Various	06/22/10
Kathy McKelvey	School Secty. I	Lakeview	09/01/10
Kathy Miller	Spec. Ed. Aide I/II	Various	06/22/10
Nadine Miller	Lib/Media Tech.	Glenknoll	09/07/10
Marlisa Montag	Clerk I/Secretary	Glenknoll	09/01/10
Gustiana Mudarsih	Noon Supv.	Lakeview	09/07/10
Diane Navarro	Noon Supv.	Morse	09/07/10
Suzi Nicoletti	Noon Supv.	Brookhaven	09/07/10
Joe Olea	Facilities Maint. Wkr.	Various	07/01/10
Blake Onishi	Spec. Ed. Aide I/II	Various	06/22/10
Anthony Ortega	Groundskeeper I	Various	07/01/10
Edwina Ortega	Noon Supv.	Brookhaven	09/07/10
Ronnette Parker	Spec. Ed. Aide III	Tynes	06/22/10
Marianne Pecora	Secretary I/Clerk	Morse	08/16/10
Tracy Peterson	Spec. Ed. Aide I/II/III	Various	06/22/10
Stacy Pinegar	School Secretary	Brookhaven	09/07/10
Devon Pippin	Noon Supv.	Brookhaven	09/07/10
Megan Poulsen	Spec. Ed. Aide I/II/III	Various	06/22/10
Keith Pugh	Facilities Maint. Wrk.	M & O	07/15/10
Marsha Quesada	Lib/Media Tech.	Glenknoll	09/07/10
Marsha Quesada	Secretary/Clerk I	Glenknoll	08/16/10
Yvette Reta	Spec. Ed. Aide I/II	Various	06/22/10
Sharlene Rice	Spec. Ed. Aide I/II	Various	06/22/10
Lisa Rickerd-Gorny	Noon Supv.	Fairmont	09/07/10
Janey Riech	Spec. Ed. Aide I/II	Various	06/22/10
Julia Riech	Spec. Ed. Aide I/II	Spec. Ed.	07/06/10
Mitzi Riggs	Secretary/Clerk I	Glenknoll	09/07/10
Philo Robold	Spec. Ed. Aide I/II	Various	06/22/10
Steven Rodriguez	Groundskeeper I	Various	07/06/10
Marie Rosales (2)	Spec. Ed. Aide I/II	Various	06/22/10
Debbie Rosenbaum	Noon Supv.	Bryant Ranch	08/30/10
Michael Rosenbaum	Noon Supv.	Bryant Ranch	08/30/10
Deborah Rosenkranz	Noon Supv.	Lakeview	09/07/10
Laura Rousel-Hooks	Spec. Ed. Aide I/II	Various	06/22/10
Mario Rubio	Spec. Ed. Aide II	Esperanza	06/22/10
Mario Rubio	Spec. Ed. Aide II	Various	06/22/10
Laura Rutledge (2)	Spec. Ed. Aide I/II	Various	06/22/10
Deanna Sabo	Spec. Ed. Aide I/II	Various	06/22/10
Melissa Sams	Noon Supv.	Brookhaven	09/07/10
Isabel Schick	Spec. Ed. Aide I/II	Various	06/22/10
Christine Schiebeck	Noon Supv.	Golden	09/07/10
Susan Schiebeck (2)	Clerk I/Secretary	Golden	09/07/10
Caroline Sewell	Noon Supv.	Lakeview	09/07/10
Leslie Shafer	Noon Supv.	Morse	09/07/10
Shu Lin Shen	Noon Supv.	Brookhaven	09/07/10
Cynthia Shepard	Noon Supv.	Lakeview	09/07/10
Kathy Simpson	Clerk I/School Secty. I	Brookhaven	09/07/10
Ezra Snider	Spec. Ed. Aide I/II	Various	06/22/10
Debbie Spitz	Spec. Ed. Aide I/II	Various	06/22/10
Sharon St. Aubin	Noon Supv.	Fairmont	09/07/10
Linda Struiksmas	Spec. Ed. Aide II	Golden	07/06/10
Susan Swinfard	Clerk I/Secretary I	Melrose	09/08/10
Brenda Thomas	Spec. Ed. Aide I/II	Various	06/22/10

<u>Substitutes</u>	<u>Position</u>	<u>Site</u>	<u>Effec. Date</u> (Cont'd)
Shuk To	Noon Supv.	Lakeview	09/07/10
Margaret Torres	Noon Supv.	Morse	09/07/10
Ray Tschudy (2)	Facilities Maint. Wrk.	Various	06/23/10
Shirley Turner	Noon Supv.	Brookhaven	09/07/10
Frank Valenzuela	Groundskeeper I	Various	07/19/10
Pat Vanderheide	Secretary	Golden	07/01/10
Mary Jane Watt	Confidential Clerk	Supt. Office	07/01/10
Cindy Whisler	Spec. Ed. Aide I/II	Various	06/22/10
Jean Whitaker	Spec. Ed. Aide I/II	Various	04/22/10
Leslie Wiseman	Spec. Ed. Aide I/II/III	Various	06/22/10
Kaylin Woolard	Spec. Ed. Aide I/II/III	Various	06/22/10
Venita Wright	Spec. Ed. Aide I/II	Various	06/22/10
Amy Yalda	Noon Supv.	Lakeview	09/07/10

<u>Stipends</u>	<u>Position</u>	<u>Site</u>	<u>Effec. Dates</u>
Fabian Angel	Event Supervision	El Dorado	09/01/10-06/15/11
Derek Baldwin	Summ. Men's Basketball	El Dorado	06/21/10-09/03/10
Kay Bradley	Event Staff	Valencia	07/01/10-06/30/11
Kay Bradley	Event Staff	El Dorado	09/01/10-06/17/11
Nina Brick	Event Supervision	El Dorado	09/01/10-06/17/11
Jessie Camarena	Event Staff	Valencia	07/01/10-06/30/11
Kevin Capps	Summ. Football	El Dorado	06/21/10-09/03/10
Arlene Chapin-Turnham	Event Supervision	El Dorado	09/01/10-06/15/11
Riley Conaway	Summ. Men's Basketball	El Dorado	06/21/10-09/03/10
Al Feola	Summ. Football Aide	El Dorado	06/21/10-09/03/10
Rigoberto Flores	Event Staff	Valencia	07/01/10-06/30/11
Jodi Goya	Summ. Women's Basketball	Valencia	06/21/10-09/03/10
Dan Hanaumi	Event Staff	Valencia	07/01/10-06/30/11
Lauren Hassler	Summ. Cheer/Song	Valencia	06/21/10-09/03/10
Lauren Hassler	Cheer	Valencia	09/01/10-05/31/11
Tom Hastings	Summ. Men's Volleyball Aide	Esperanza	06/21/10-09/03/10
Sydney Hermann	Summ. Women's Lacrosse	Esperanza	06/21/10-09/03/10
Timothy Jones	Summ. Women's Basketball	Valencia	06/21/10-09/03/10
Lauren Knox	Summ. Dance	Esperanza	06/21/10-09/03/10
Brad Knutson	Summ. Football Aide	Esperanza	06/21/10-09/03/10
Michelle Laurenzi	Summ. Women's Soccer Aide	YLHS	06/21/10-09/03/10
Shelley Lawrence	Summ. Cheer and Song	YLHS	06/21/10-09/03/10
Jill Lawson	Event Staff	El Dorado	09/01/10-06/15/11
Trevor Lightner	Summ. Men's Tennis Aide	El Dorado	06/21/10-09/03/10
Brittney Lowe	Summ. Women's Volleyball	Esperanza	06/21/10-09/03/10
Carol Martinez	Event Staff	Valencia	07/01/10-06/30/11
Carol Martinez	Event Staff	El Dorado	09/01/10-06/15/11
Ryan Martinez	Event Staff	Valencia	07/01/10-06/30/11
Elaine Miles	Event Staff	El Dorado	09/01/10-06/15/11
Britney Moore	Summ. Women's Volleyball	El Dorado	06/21/10-09/03/10
Kino Oaxaca	Summ. Men's Soccer	Esperanza	06/21/10-09/03/10
Danny Ortega	Event Staff	El Dorado	09/01/10-06/15/11
Cecilia Pina	Event Staff	Valencia	07/01/10-06/30/11
Bionca Quesada	Summ. Women's Tennis	Esperanza	06/21/10-09/03/10
Bionca Quesada	Summ. Men's Tennis	Esperanza	06/21/10-09/03/10
David Quintero	Event Staff	Valencia	07/01/10-06/30/11
Erica Richey	Summ. Women's Soccer	YLHS	06/21/10-09/03/10
Steve Rodriguez	Dist. Ground Supv.	Valencia	07/01/10-06/30/11

<u>Stipends</u>	<u>Position</u>	<u>Site</u>	<u>Effec. Dates (Cont'd)</u>
Wesley Savin	Summ. Women's Tennis	El Dorado	06/21/10-09/03/10
Kyle Selvig	Summ. Men's Basketball	Valencia	06/21/10-09/03/10
Jose Serna	Event Supervision	El Dorado	09/01/10-06/15/11
Melanie Spickelmier	Event Supervision	El Dorado	09/01/10-06/15/11
Lisa Swearingen	Event Staff	Valencia	07/01/10-06/15/11
Janice Taylor	Event Staff	El Dorado	09/01/10-06/15/11
Michael Trevino	Event Staff	Valencia	07/01/10-06/15/11
Eric Wren	Summ. Men's Lacrosse	Esperanza	06/21/10-09/03/10
Michele Zaldin	Event Staff	Valencia	07/01/10-06/30/11

Child Care Program; Child Care Teacher I; All Sites, Short Term: NTE 250 Hrs., Substitute, NTE 8 Hrs., All Sites, 07/01/10-06/30/11

Ashley Garlick
 Krista Kress
 Nicole Lyons
 Amanda Robins

CERTIFICATED PERSONNEL REPORTLeaves of Absence

<u>Employee</u>	<u>Position</u>	<u>Site</u>	<u>Reason</u>	<u>Effective</u>
Cynthia Baugh	Sp/Lang. Sp.	Spec. Ed.	FMLA/Unpaid Pers.	2010-2011 SY
Tanya Calabrese	Psychologist	Spec. Ed.	PDL/FMLA	08/23/10-12/17/10
Kristen McDonald	Teacher	Golden	PDL/FMLA	08/31/10-11/01/10
Claire Morrill	Teacher	YLMS	Unpaid Personal	2010-2011 SY
Grace Sohn	Teacher	Valadez	PDL/FMLA	08/31/10-11/05/10

Return from Leave of Absence

<u>Employee</u>	<u>Position</u>	<u>Site</u>
Veronica Casas	Teacher	Melrose

Correction

<u>Employee</u>	<u>Position</u>	<u>Site</u>	<u>Correction</u>	<u>Orig. Board</u>
Curt Pike	Summ. Sch. Principal	El Dorado	06/21/10-07/21/10	04/20/10

Employ, Cert. Management

<u>Employee</u>	<u>Position</u>	<u>Site</u>	<u>Effect. Date</u>
Diane Lohrman	Prog. Spec.	Spec. Ed.	08/24/10
Amy McGuire	Psychologist	Spec. Ed.	08/23/10

Employ, Effective 08/31/10

<u>Teacher</u>	<u>Subject</u>	<u>Site</u>	<u>Status</u>
Vanessa Amorin	Spanish	Travis MS	Temp
Ashley Banks	Mod/Sev	Tynes	Temp
Joel Bradford	Soc. Sci.	Tuffree	Temp
Richard Castro	ELD	Valadez	Prob 2
Margarita Chavez	Soc. Science	Valadez	Prob 1
Mark Chavez	SDC	El Dorado	Prob 1
Bonnie Culp	Home Econ.	Esperanza	Prob 1
Lyndsey Cuomo	SDC	Travis Elm.	Prob 1
Pamela Cyrus	Math	BYMS/TRMS	Prob 2
Kristen Dan	RSP	Tuffree	Prob 1
Dianne Di Galbo	Lang. Arts	Valadez	Prob 1
Tracy Eseltine	Math	YLMS	Prob 2
Tiffany Gilliam	ELD	El Dorado	Prob 1
Yvette Gomez	RSP	Melrose	Prob 1
Tracy Jankowski	RSP	Glenview	Temp
Nancy Lanzi	SDC	Woodsboro	Prob 1
Ashley Moore	Lang. Arts	El Dorado	Prob 1
Matthew Musselman	Math	YLHS	Prob 1
Jenny Nguyen	SED	El Dorado	Temp
Brigitte Othmer	Math	Esperanza	Prob 1
Molly Palacios	Mod/Sev.	Tynes	Prob 1
Jamie Randall	Mod/Sev.	Tynes	Temp
Ashley Redfox	Mod/Sev.	Tynes	Temp
Charles Reta	Soc. Sci.	Tuffree	Temp
Elizabeth Riley	Speech Path.	Spec. Ed.	Prob 1
Linda Schenkoske	SDC	Van Buren	Prob 1
Catrina Shameh	Japanese	Esperanza	Prob

Employ. Effective 08/31/10 (Cont'd)

<u>Teacher</u>	<u>Subject</u>	<u>Site</u>	<u>Status</u>
Phillip Siordia	Asst. Band Dir.	El Dorado	Prob 1
Lyndsey Smith	Lang. Arts	YLMS	Tenure
Ryan Sullivan	SDC	Mabel Paine	Temp
Candace Tingley	Lang. Arts	Valadez	Temp
William Truong	Bio/Chem.	Valencia	Prob 1
Kevin Valenzuela	Soc. Sci.	Valadez	Prob 1
Lloyd Walls	Soc. Sci.	El Dorado	Prob 1
Tiffany Ward	Bio/Chem.	YLHS	Prob 1
Katrina Wong	RSP	Kraemer	Temp
Jessica Yu	RSP	Bryant Ranch	Temp

Re-Employ. Part-time, 2010-2011 School Year

<u>Employee</u>	<u>Percentage</u>
Daune Abadie	50%
Michelle Anderson	60%
Andrea Barry	40%
Jacqueline Bartak	60%
Sheri Bilewitz	80%
Angel Browning	60%
Melanie Carmona	50%
Marie Cimbora	60%
Stephanie Dempsey	50%
Patricia Dillard	80%
Laura Does	50%
Tracy Downey	65%
Natali Drake-Riggio	50%
Julie Fast	60%
Donna Frely	50%
Lisa Fulkerson	50%
Aileen Grant	60%
Illyse Harker	50%
Sandee Harper	50%
Michael Hass	25%
Amy Henderson	80%
Deanne Hoff	50%
Sandy Jung	50%
Lisa Keinert	40%
Diana Lindwall	60%
Erin Lang	50%
Judy Linnan	40%
Ana Lucero	50%
Christine Marsden	60%
Erika Mayer	71%
Heather Mulkey	50%
Jacquelyn Nolan	90%
Genevieve Olson	50%
Yeni Osuna-Pasillas	50%
Dawn Page	50%
Julie Pak	50%
Christine Pizzo-Spina	50%
Joy Rasic	50%
Lori Rikel	40%

Re-Employ, Part-time, 2010-2011 School Year (Cont'd)

<u>Employee</u>	<u>Percentage</u>
Nicole Rodriguez	50%
Janet Salley	50%
Karen Samet	80%
Karen Schneider	60%
Annette Shaffer	70%
Grace Stutz	60%
Shellie Teston	40%
Kim Thorp	50%
Lauren Thurston	40%
Joanne Vaught	50%
Richard Watson	33%
Diane Wiest	75%
Christy Wright	40%

Change of Status

<u>Employee</u>	<u>Previous Position</u>	<u>Change</u>	<u>Site</u>	<u>Effective</u>
Karen Estrada	Teacher 50%	Teacher 100%	Travis Elem.	08/31/10
Michelle Flenniken	Teacher 50%	Teacher 100%	Glenview	08/31/10
Ann Greenspan	Teacher 50%	Teacher 100%	Travis Elem.	08/31/10
Erin Koss	Spec. Ed. Tch.	Resource Spec.	Van Buren	2010-2011 SY
Sofia Meier	Supv. Health Svs.	80%-70%	Health Svs.	07/01/10
Ryan Sullivan	Spec. Ed. Aide	Spec. Ed. Teacher	Mabel Paine	2010-2011 SY

Reinstatement from Lay-Off, 08/31/10

Leslie Alexander
Jessica Cuellar

Hourly PositionsPupil Services, Home/Hospital Teachers, \$27/hr., Prep., \$25/Hr., 2010-2011 School Year

Anita Amaya
Martha Braccini
Kathy Carter
Heidi Chipman
Christian Collins
Sheila Chew
Mary Ellen Cummings
Deborah De Rosett
Kathryn Fattal
Robbie Fattal
Mark Francuz
Theresa Harry
Ronald Hess
Julie Jackson
Karen Keenan
Estela Martinez
April Mezin
Michael Moore
Steven Picht

Hourly PositionsPupil Services, Home/Hospital Teachers, \$27/hr., Prep., \$25/Hr., 2010-20011 School Year (Cont'd)

Molly Raasch
 Ryan Shaw
 Andrew Spoonhower
 Candace Thompson
 Daniel Velez

Summer School

<u>Employee</u>	<u>Site</u>	<u>Position</u>	<u>Hours</u>	<u>Effec. Dates</u>
Shani Boone	Rose Dr.	Speech/Lang. Therapist	15	06/22/10-08/21/10
Candee Johnson	Spec. Ed.	Adapted PE	6	07/15/10-07/16/10
Jeffrey Larson	Spec. Ed.	SDC Teacher	6/Day	06/28/10-07/29/10
Jeffrey Larson	Spec. Ed.	Summer Sch. Prep.	8	06/28/10-07/29/10
Rita Lewis	Glenknoll	Mild/Mod. Teacher	12	06/13/10-06/30/10
Laura Pellegrini	George Key	Speech/Lang. Path.	4/Day	06/22/10-08/01/10
Rafael Plascencia	Topaz	Summ. Enrich. Principal	105	07/01/10-08/06/10

Educational Services, Enrichment Summer School, \$30/Hr., NTE 5 Hr/Day, 06/28/10-07/28/10

Cindy Samson
 Sara Ray

Educational Services, Summer Substitute Teacher, \$30/Hr., 06/22/10-07/29/10

<u>Employee</u>	<u>NTE Hrs/Day</u>
Donna Brothers	8
Keith Cuculic	8
Nancy Lanzi	8
Shellie MacMurtri	6

Educational Services, Summer School Test Proctor, \$27/Hr., NTE 7 Hrs., 08/12/10-08/12/10

Elaine Hudson
 Robin Rubinstein

Rio Vista, Summer ELD Camp, \$30/Hr., 07/01/10-08/30/10

<u>Employee</u>	<u>NTE Hours</u>
Kathy Bernhardt	66
Jackie Caballero	66
Caryn Lewis	40
Cathy Miller	66
Sheri Simmons	66
Mariana Mondragon	66

Special Education, August Program, \$30/Hr., NTE 45 Hrs., 08/09/10-08/26/10

Grace Gordon
 Gina Ramshaw

Extra Duty Assignments

<u>Employee</u>	<u>Site</u>	<u>Extra Duty</u>	<u>Hrly. Rate</u>	<u>Hours</u>	<u>Effec. Dates</u>
Bertha Alba	Melrose	SLI Coordinator	\$25	6	06/22/10-06/30/10
Loree Begin (2)	Parkview	Curriculum Dev.	\$25	80	07/01/10-08/15/10
Angel Browning	Spec. Ed.	Autism Spec. Support	\$27	50	06/21/10-08/31/10
Jose Cabrera	Topaz	Technology Rep.	\$25	300	2010-2011 SY

Extra Duty Assignments (Cont'd)

<u>Employee</u>	<u>Site</u>	<u>Extra Duty</u>	<u>Hrly. Rate</u>	<u>Hours</u>	<u>Effec. Dates</u>
Judith Carmona	Ed. Svs.	Intervention Support,	\$25	100	07/01/10-10/12/10
Melanie Carmons	Ed. Svs.	BTSA Support	\$25	100	2010-2011 SY
Darius Cervantes	El Camino	Indep. Study	\$27/\$25	6	2010-2011 SY
David Chung	Ed. Svs.	Differentiated Inst.	\$25	12	11/15/10-01/31/11
Vivian Cuesta	Melrose	ELD Summ. Camp	Per Diem	5/Days	07/01/10-07/30/10
Valerie Gabriel	Valadez	School Site Council	\$25	100	2010-2011 SY
Jason Gray	Parkview	PLATO Program	\$25	90	08/01/10-01/14/11
Paul Juarez	Spec. Ed.	Transition Counselor	\$35	48	08/23/10-08/31/10
Rita Lewis	Spec. Ed.	Inservice/Training	\$25	160	2010-2011 SY
Lia Marentes	Spec. Ed.	Medi-Cal	Per Diem	38/Day	08/24/10-06/23/11
Beth Mazurier	Spec. Ed.	IEP Mtg.	\$25	2	07/01/10-08/31/10
Crystal McCune	Spec. Ed.	Sub. Psychologist	Per Diem	62/Day	08/30/10-01/04/11
Diana McKibben (2)	Topaz	Interventions/SSC	\$25	500	2010-2011 SY
Dawn Nelson	Spec. Ed.	Assist w/Assessment	Per Diem	124	08/24/10-06/23/11
Dwight Osborne	Valencia	Tech. Support	\$25	40	07/01/10-08/27/10
Paskalina Papadopoulos	Spec. Ed.	Sub. Psychologist	Per Diem	55/Day	09/09/10-01/04/11
Norma Perez-Rocha	Topaz	Disaster Plan Coord.	\$25	100	2010-2011 SY
Brianna Peterson	Spec. Ed.	Preschool ARRA	\$25	4	07/01/10-08/31/10
Constance Polivka	Spec. Ed.	Case Manager	\$25	250	2010-2011 SY
RebeccaLee Smith	Bryant Ranch	SI Coordinator	\$25	20	2010-2011 SY
Scott Sundstrom	Topaz	Student Walk Club	\$27	200	2010-2011 SY
Edward Tabata	Inst. Spec.	Science/Tech. Train.	\$25	160	2010-2011 SY
Deana Thelen	Fairmont	PLC Coordinator	\$25	15	2010-2011 SY
Kim Voge	Ed. Svs.	History Tech.	\$25	10	09/13/10-12/30/10
Charles Watts	Inst. Spec.	Train/Site Support	\$25	160	2010-2011 SY
Mary Wilson	Fairmont	SLI Coordinator	\$25	50	2010-2011 SY

Bryant Ranch, Staff Development, \$25/Hr., 2010-2011 SY

Maureen Blair
 Wendy Caldwell
 Hollis Cruse
 Gunilla Davidson
 Cathie Dolen
 Jennifer Estep
 Jori Henry
 Karen Inouye
 Kristi Langsdale
 Karen Lewis
 Jill McClain
 Nicole Muraoka
 Jana Naval
 Tammie Platt
 RebeccaLee Smith
 Elizabeth Stumpf
 Andrea Taylor
 Kim Voge
 Kim Wright
 Melanie Yoshimura

Educational Services, Support to Consulting Teachers, \$25/Hr., NTE 68 Hrs., 2010-2011 SY

Kerry Collins
Cynthia Watson

Educational Services, Coaches Training, \$25/Hr., NTE 24 Hrs., 2010-2011 SY

Wayne Carlson
John Van Dam
Keri Walters

Educational Services, Moving Offices/Closing School Year, \$25/Hr., 07/01/10-06/30/11

<u>Employee</u>	<u>NTE Hours</u>
Nathaniel Babcock	40
Steve Bowman	10

Educational Services, MS Writing Committee, \$25/Hr., NTE 20 Hrs., 07/01/10-06/30/11

Valerie Gabriel
Don Gebler
Erika Mayer
Laura Moody
Shane Twamley
Dana Zywieciel

Educational Services, For Language! Placement Test, \$27/Hr., NTE 10 Hrs., 08/02/10-08/27/10

Randi Morgan
Leslie Poling

Educational Services, Phonology Training, \$25/Hr., NTE 8 Hrs. Prep., \$27/Hr., NTE 4 Hrs. Presentation, 09/13/10-10/29/10

Elvira Bermudez
Donna Lopez

Educational Services, CPR Training, \$25/Hr., NTE 25 Hrs. Prep., \$27/Hr., NTE 10 Hrs. Presentation, 09/13/10-06/30/11

Shari Dunn
Patty Nitzel
Deborah Sintov

Educational Services, Tech. Class Training, Prep., \$25/Hr., Present., \$27/Hr., 09/13/10-06/30/11

<u>Employee</u>	<u>Prep. Hrs.</u>	<u>Present Hrs.</u>
Jose Cabrera	4	8
Sean Williams	2	4

Educational Services, Project Read, Prep., \$25/Hr., Present., \$27/Hr., 08/16/10-11/30/10

<u>Employee</u>	<u>Prep. Hrs.</u>	<u>Present Hrs.</u>
Patty Davidson	6	
Terri Hanna	30	6
Jill Nesbit	23	6
Mary Wilson	6	

Educational Services, Science Kit Training, \$25/Hr., 2010-2011 SY

<u>Employee</u>	<u>Hours</u>
Kerry Archuleta	6
Angelina Avila-Perez	6
Tami Borrego	6

Educational Services, Science Kit Training, \$25/Hr., 2010-2011 SY (Cont'd)

<u>Employee</u>	<u>Hours</u>
Wendy Caldwell	12
Tracy Chung	6
Joy Cole	6
Sara Deland	6
Amy Livergood	6
Donna Lopez	12
Christa Marmolejo	6
Jenny McLane-Raya	12
Paula Powers	6
Jennifer Rasic	6
Gail Spear	12
Teresa Vitelli	6

Educational Services, Scope & Sequence, 07/01/10-06/30/11

<u>Employee</u>	<u>Hours</u>	<u>Hrly. Rate</u>
Carin Benner	15	\$25
Kathy Chakan	24	\$60

Educational Services, Summer Task Force, \$25/Hr., NTE 60 Hrs., 06/21/10-08/27/10

Jon Gomez
Minerva Pena

Educational Services, Teach. American History Focus Group, \$25/Hr., NTE 2 Hrs., 07/01/10-07/02/10

Frank Borgese
Suzanne Borgese
Jennifer Bremer
Sunshine Cavalluzzi
Janeen Hill
Jeremy Kelly
Jennifer Luchesi-Long
Christine McLean
RebeccaLee Smith

Educational Services, Teach. American History Focus Group, \$25/Hr., NTE 2 Hrs., 07/01/10-07/02/10

Karen Swanson
Kimberly Voge

Educational Services, Technology Integration Training, \$25/Hr., 08/09/10-12/30/10

<u>Employee</u>	<u>Hours</u>
Deniz Akansel	4
Jennifer Bremer	40
Wendy Lowry	4
Christine McLean	4
Charles D. Watts	60
Michael Young	4

Educational Services, Training for New Spec. Ed. Tchrs., \$25/Hr., NTE 7 Hrs., 08/23/10-08/27/10

Ashley Banks
Carolyn Carr
Mark Chavez
Lyndsey Cuomo
Kristen Dan

Educational Services, Training for New Spec. Ed. Tchrs., \$25/Hr., NTE 7 Hrs., 08/23/10-08/27/10
(Cont'd)

Yvette Gomez
 Tracy Jankowski
 Adrienne Kupper
 Nancy Lanzi
 Erica McBride
 Amy McGuire
 Jenny Nguyen
 Molly Palacios
 Naila Quereshi
 Jamie Randall
 Ashley Redfox
 Elizabeth Riley
 Linda Schenkoske
 Ryan Sullivan
 Katrina Wong
 Jessica Yu

Fairmont, Kindergarten Assessment, \$27/Hr., 08/23/10-08/25/10

<u>Employee</u>	<u>Hours</u>
Gina Chi	10
Grace Gordon	6
Janet Horton	10
Sylvia Recker	10
Grace Stutz	10
Shellie Teston	10

Fairmont, PLC Coordinator, \$25/Hr., 2010-2011 SY

<u>Employee</u>	<u>Hours</u>
Jacqueline Bluemel	15
Patricia Davidson	15
Alex Marestaing	15
Karen McCoy	15
Christine O'Shea	15
Jeffrey Sanders	15
Grace Stutz	8
Shellie Teston	8

Melrose, ELD Camp, \$27/Hr., NTE 64 Hrs., 08/05/10-08/26/10

Richard Castro
 Traci Eseltine
 Thelma Gandara-Tatar
 Kathy Malone
 Anna Schenck

Modernization Move, Misc. Sites, \$25/Hr., NTE 8 Hrs., 06/01/10-08/27/10

<u>Employee</u>
Sheri Bilewitz
Donna Bradley
Kathy Carter
Jodi Castillo
Beth Fox
Joel Godby

Modernization Move, Misc. Sites, \$25/Hr., NTE 8 Hrs., 06/01/10-08/27/10 (Cont'd)

Employee

Tonya Gordillo
Karen Hope
Barbara Howe
Gloria Johnson
Valerie Johnson
Elaine Kim
Leslie Kirui
Michelle Larson
Patty Linza
Jeff Louie
Leslie Lutz
Geri McBride
Wendy McGinnis
Kelly Moreno
Laura Pellegrini
Huong Quach-Chang
Joy Rasic
Rosalind Rue
Barbara Slater
Susan Worth

Rio Vista, Opening School/Planning, \$25/Hr., NTE 8 Hrs., 06/01/10-06/30/10

Jackie Caballero
Stephanie Valdez-Schrader

Rio Vista, SRA Training, \$25/Hr., NTE 5 Hrs., 06/01/10-06/30/10

Carol Eckenrode
April Mezin
Mark Ukes

Topaz, Student Study Team, \$25/Hr., NTE 100 Hrs., 09/07/10-06/16/11

Elvira Bermudez
Stacy Keen

Topaz, Staff Development, \$25/Hr., NTE 50 Hrs., 2010-2011 SY

Elvira Bermudez
Jose Cabrera
Heather Collard
Carol Doeling
Ticiania Doty
Blanca Gibbons
Shannon Gibson
Michael Hedderig
Stacy Keen
Rossana Lavigne
Salvador McBenttez
Diana McKibben
Minerva Pena
Norma Perez-Rocha
Erin Pon
Judy Price
Carol Purga

Topaz, Staff Development, \$25/Hr., NTE 50 Hrs., 2010-2011 SY (Cont'd)

Kristen Thompson
Norma Zamora

Valadez, PBIS Curriculum Dev., \$25/Hr., NTE 24 Hrs., 08/02/10-08/27/10

Lynna Kim
Timo Liu
Leslie Poling
Eduardo Rodriguez

Valadez, SOAR Curriculum Dev., \$25/Hr., 08/02/10-08/27/10

<u>Employee</u>	<u>Hours</u>
Leila Deliman	24
Xochitl Diaz	40
David Mc Donald	24
Maria Ruvalcaba	24
Jeffrey Schumerth	24
Dana Zywieciel	40

Woodsboro, Kindergarten Assessments, \$27/Hr., NTE 5 Hrs., 08/30/10-09/03/10

Janeen Hill
Tami LaMagna
Charlene Leonard

Contract Amendment 2010-2011

Jeanie Cash
Doug Domene
Suzette Lovely
Candy Plahy

Stipends

<u>Employee</u>	<u>Site</u>	<u>Duty</u>	<u>NTE Amount</u>	<u>Effec. Dates</u>
Ruth Freiman	Travis Ranch	Co-Curricular Vocal Music	\$443.68	01/01/10-04/22/10
Wendy McGinnis	Spec. Ed.	Head Special Olympics	\$2234.65	2010-2011 SY
Susan Worth	Spec. Ed.	Dept. Chair Adapt. PE	\$2410.00	08/31/10-06/30/11

Educational Services, BTSA Consultant Teacher, 2010-2011 SY

<u>Employee</u>	<u>Amount</u>
Suzanne Borgese	\$1700.00
Linda Carl	\$1700.00
Sharon Farrell	\$3400.00
Susan Gardner	\$1700.00
Tonya Gordillo	\$3400.00
Janmarie Halliday	\$3400.00
Jean Jacquot	\$3400.00
Cameron Paulin	\$1700.00
Sue Sawyer	\$3400.00
Donna Schafer	\$3400.00
Karen Sieper	\$3400.00
Patricia Souto	\$3400.00
Gail Spear	\$1700.00
Karen Swanson	\$3400.00
Dave Tennant	\$3400.00
Wendy Takahashi	\$1700.00

El Camino, Department Chair, 2010-2011 SY

<u>Employee</u>	<u>Subject</u>	<u>Amount</u>
Jennifer DiCarlo	ASB	\$3544.00
Marlene Hollar	Lang. Arts	\$2362.00
Bryon Vouga	Technology	\$1181.00
Andrew Ward	Applied Arts	\$2362.00

El Dorado, Event Staff, 2010-2011 SY

<u>Employee</u>	<u>Amount NTE</u>
Scott Boveia	\$880.00
Laura Crays	\$880.00
Connie Grosse	\$880.00
Jeff Hazard	\$880.00
Jeanine Henriques	\$880.00
Steve Lawson	\$880.00
William M. Lucas	\$880.00
Ryan Mounce	\$880.00
Jeff Picou	\$880.00
Stephanie Roberts	\$440.00
Gabrielle Stephenson	\$440.00

Special Education, Special Olympics Assistant, 2010-2011 SY

<u>Employee</u>	<u>NTE Amount</u>
Leslie Kirui	\$1117.33
Barbara Slater	\$1117.33

Valencia, Event Staff, NTE \$1800.00, 2010-2011 SY

Luis Garcia
 Barrett Gardner
 Jason Gray
 Michael Grismer
 David Hatori
 Fred Jenkins
 Mike Marrujo
 Gerardo Rodriguez
 Leonard Takahashi
 John Van Dam
 John Winek

Summer Coaching, 06/21/10-09/03/10

<u>Employee</u>	<u>Site</u>	<u>Sport</u>	<u>NTE Amount</u>
Gabriel Cueva	YLHS	Wrestling	\$3000.00 **
Christie Curran	Esperanza	Cross Country Aide	\$2000.00 **
Brian Fortenbaugh	YLHS	Wrestling	\$5400.00 **
Shan Lawson	El Dorado	Wrestling Aide	\$5400.00 **
Nicholas Merica	El Dorado	Football Aide	\$3000.00 **
Chris Wright	Esperanza	Football	\$1500.00 **

Substitute Teachers

Kari Boeglin
 Deborah Fassel

Substitute Teachers (Cont'd)

Kristine Seymour
Sharon Callahan
Jesus Granados
Linda Hendren
Russell Klinger
Wendy Segat
Christina Skaggs
Jennifer Stanley

** Summer Sports Clinic- Fee Based